

OPEN HOUSE

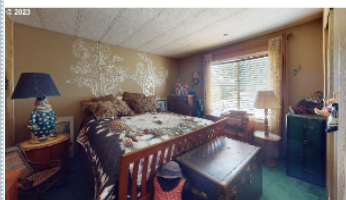
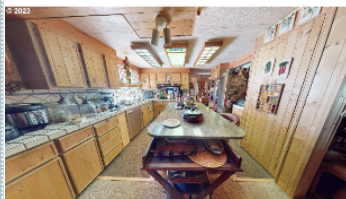


Open House 3/09 12pm-2:00pm

Lucky draw wins a gift card on raffle!

9220 SW LINE DR , Cornelius OR 97113

MLS:23352058 PRICE:\$399,999.00



Bedrooms: 3
Year Built: 1978
Lot Size: 15682
Floors: 1

Full Baths: 2
HOA: Yes
Sqft: 1792

PROPERTY FEATURES:

- Central heat
- Tile floor
- Dining room
- Stove/Oven
- Stainless steel appliances
- Yard
- Fireplace
- Family room
- Dishwasher
- Microwave
- Laundry area - inside
- Walk-in closet
- Living room
- Refrigerator
- Granite countertop
- Balcony, Deck, or Patio

PROPERTY DESCRIPTION:

Discover the allure of this charming double-wide with 3 bedrooms and 2 full baths nestled in a picturesque country setting on 0.36 acres! The home boasts delightful features, including light wood paneling, an upgraded kitchen, and renovated bathrooms. The primary bedroom is a retreat with a walk-in closet and an en-suite bath.

[FIND MORE](#)

[VIEW PDF](#)

[SEND TO CLIENTS](#)



Alberto Gamino
All Professionals Real Estate
Phone: 971.645.0069
[Email Me](#)



All information deemed reliable but not guaranteed.