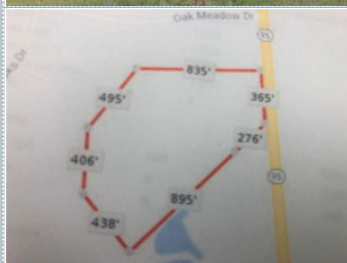




## Great Investment Property

1540 N Hwy 95 Highway , Bastrop TX 78602

MLS: 6997692    PRICE: \$1,500,000.00



**Subdivision:** Barker, Leman  
**Lot Size:** 19.588 Acres

**Year Built:** 1940  
**Parking:** 4 Cars

### PROPERTY FEATURES:

☑ Central A/C    ☑ Central heat

### OTHER FEATURES:

☑ Water & Septic onsite

### PROPERTY DESCRIPTION:

19.580 Acre commercial development site. Approx. 9.3 Miles south of Elgin and 6.8 miles north of Bastrop with approx. 400 ft. of Hwy frontage on HWY 95. Directly across Hwy from Camp Swift. Ideal for commercial development, including light industrial, retail, single family or multi family. Seller will look at all offers.



[FIND MORE](#)

[VIEW MAP](#)

[VIEW PDF](#)

[SEND TO CLIENTS](#)



**Bo & Donna**  
**Brasfield**  
Brasfield Real  
Estate  
Phone: (512)  
365.6500  
DRE#: 434992  
[dbrasfield@ccim.net](mailto:dbrasfield@ccim.net)  
[My Website](#)



All information deemed reliable but not guaranteed.