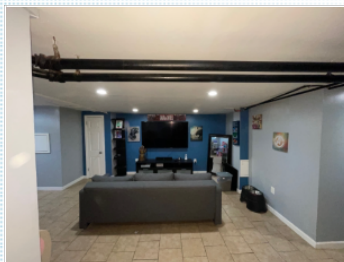


**JUST
REDUCED**



3 % Commission

Great block Near transportation

329 E HORTTER STREET , Philadelphia PA 19119

MLS:PAPH2006694 PRICE:\$332,000.00

Bedrooms: 4
Full Baths: 2

Subdivision: Mt Airy
Parking: 1 Car

PROPERTY FEATURES:

- Central heat
- Hardwood floor
- Dining room
- Stove/Oven
- Yard
- Fireplace
- Family room
- Dishwasher
- Microwave
- Walk-in closet
- Living room
- Refrigerator
- Basement

PROPERTY DESCRIPTION:

Easy access to transportation! Near hospital, Universities. This 4 bedrooms home with deck, living room, large dining room, front yard, tree lined street Enclosed porch, fireplace. Large finish basement. Motivated Seller!

[VIEW PDF](#)

[SEND TO CLIENTS](#)



TAMMIE BROOKS
REALTY MARK ASSOCIATES
Phone: 215.376.4444
Mobile: 215.545.0269
Fax: 866.279.5161
Beboss@msn.com
[My Website](#)



All information deemed reliable but not guaranteed.