

4-UNIT RESIDENTIAL COMPLEX

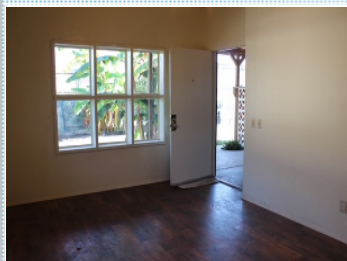
2911-17 Central Ave. , Spring Valley CA 91977

MLS:PTP2105593

PRICE:\$998,950.00

Year Built: 1950
Parking: 12 Cars
Floors: 1

Lot Size: .26 ACRES
Sqft: 2000 SF Living Space



PROPERTY DESCRIPTION:

4-UNIT INVESTMENT OPPORTUNITY AWAITS! Perfect for the first time investor or someone completing a 1031 Exchange. Recent updates include, new asphalt driveway and parking, new covered porches, exterior paint and roof coating. Each unit is approximately 500sf with 1 bedroom/1 bath. All units with separate gas and electric meters.

[VIEW PDF](#)

[SEND TO CLIENTS](#)



Amy Worley
Bluesage Properties, Inc.
Phone: 619.754.4063
DRE#: 02020502
amy@bluesageprop.com



All information deemed reliable but not guaranteed.