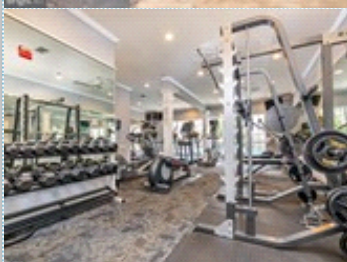
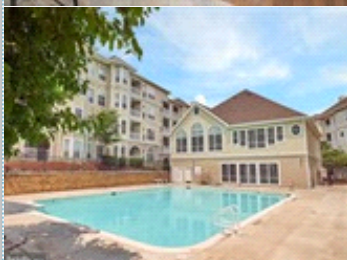
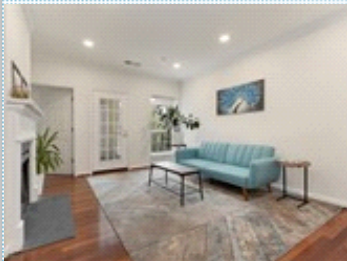


## 4551 Strutfield Ln Unit 4326

Just minutes from Shirlington and Crystal City

4551 Strutfield Ln , Unit 4326 , Alexandria VA 22311

MLS: VAAX252790    PRICE: \$392,090.00



**Bedrooms:** 2  
**Full Baths:** 2  
**HOA:** \$415/month  
**Sqft:** 1076

**Subdivision:** Palazzo at Park Center  
**Year Built:** 2000  
**Parking:** 2 Cars  
**Floors:** 3

### PROPERTY FEATURES:

- ❑ Central A/C
- ❑ High/Vaulted ceiling
- ❑ Tile floor
- ❑ Dining room
- ❑ Refrigerator
- ❑ Granite countertop
- ❑ Dryer
- ❑ Central heat
- ❑ Walk-in closet
- ❑ Living room
- ❑ Breakfast nook
- ❑ Stove/Oven
- ❑ Stainless steel appliances
- ❑ Balcony, Deck, or Patio
- ❑ Fireplace
- ❑ Hardwood floor
- ❑ Office/Den
- ❑ Dishwasher
- ❑ Microwave
- ❑ Washer

### PROPERTY DESCRIPTION:

Renovated large 2 bedroom 2 bathroom you don't want to miss! Vacant & Available Now! Unit comes with 2 parking spaces, one guest parking pass & a third floor balcony overlooking the interior courtyard. Brand-new stainless steel Samsung appliances in the kitchen, new large washer & dryer in unit, new door handles & levers, new vanities & lights, etc

[FIND MORE](#)   [VIEW MAP](#)   [VIEW PDF](#)   [SEND TO CLIENTS](#)   [VIRTUAL TOUR](#)



**Emil Simionov**  
Re/Max Distinctive  
Phone: 703.821.1840  
Mobile: 703.298.1077  
[cristina@casereteam.com](mailto:cristina@casereteam.com)



All information deemed reliable but not guaranteed.