

## 20 AC's - Zoned Commercial

Prime location at Intersection of I-20 & TX-322

2810 East Overland Trail , Abilene TX 79601



MLS: 14434115

PRICE: \$4,496,737.00

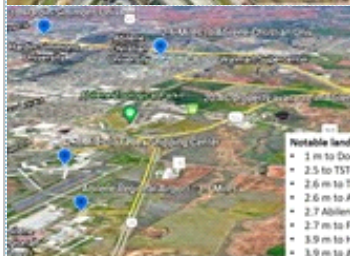


HOA: None  
Sqft: 872071

Lot Size: 20 AC

### OTHER FEATURES:

- ☑ Utilities available to site! ☑ Daily TC ~36,000 VPD! ☑ Near significant landmarks!
- ☑ Click 'Find More' link below
- ☑ Click 'Virtual Tour' link!



### PROPERTY DESCRIPTION:

Located at a prime location in Abilene, TX (on the first Abilene exit heading west on I-20 and at the intersection with Hwy 322). The property has ~1040-ft of service road access (including the intersection with hwy322). Zoned Commercial (GR, GC, and AO); Public utilities available to the site; daily TC ~36,000 VPD; near significant landmarks.



[FIND MORE](#) [VIEW MAP](#) [VIEW PDF](#) [SEND TO CLIENTS](#) [VIRTUAL TOUR](#)



**Nicholas Miller**  
Realty Side by Side, LLC  
Phone: 817.913.4615  
Fax: 888.632.7997  
[NMiller@realtysidebyside.com](mailto:NMiller@realtysidebyside.com)



All information deemed reliable but not guaranteed.