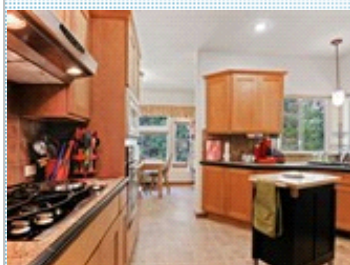


Sandy Ridge Northwood Rancher

5003 N Elton Lane , Spokane WA 99212

MLS: 202019775 PRICE: \$433,900.00

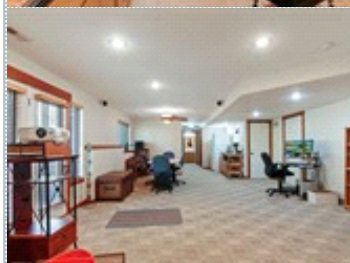


Bedrooms: 4
Year Built: 2005
Lot Size: 8041
Floors: 1

Full Baths: 3
HOA: \$55.
Sqft: 2904

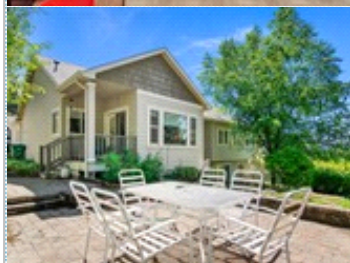
PROPERTY FEATURES:

- Central A/C
- High/Vaulted ceiling
- Living room
- Dining room
- Stove/Oven
- Washer
- Yard
- Central heat
- Walk-in closet
- Bonus/Rec room
- Dishwasher
- Microwave
- Dryer
- Fireplace
- Family room
- Office/Den
- Refrigerator
- Basement
- Balcony, Deck, or Patio



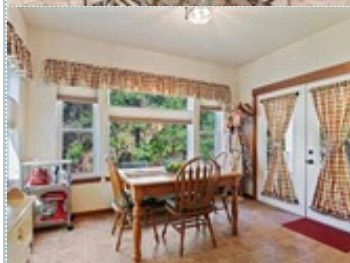
OTHER FEATURES:

- Main Floor Utilities
- Very Private Back Yard
- In-Law Setup in Basement
- West Valley School District



PROPERTY DESCRIPTION:

Well-maintained spacious 4 BD, 3 bath, 2912 sqft home w/a walk-out lower level in Sandy Ridge in the lovely foothills of Northwood. Built in 2005 w/many upgrades including superior siding & designer touches. Current owners upgraded main level from carpeting to hand-scraped oak flooring. Secluded backyard w/canyon view. Bump-out dining area w/multiwindow views of backyard canyon. Large main floor master suite w/double sinks, freestanding shower & large walk-in closet. Oversized 608 sqft 2-vehicle garage w/separate overhead doors & external door to north side of property. 1285 sqft finished lower level w/potential MIL living space w/2 BDs, BATH, kitchenette, gas fire place, storage, living & dining areas, a small office, & walkout access to terraced backyard w/2 patio/BBQ areas. North/west side entrance deck to main level. Upper patio has nearby outlet for potential hot tub. Private cul-de-sac w/city landscape views. Located just blocks from Spokane River, Camp Sekani Park, & Millwood w/easy access to I90.



[VIEW MAP](#)

[VIEW PDF](#)

[SEND TO CLIENTS](#)

[VIRTUAL TOUR](#)