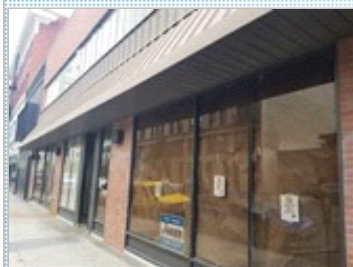


Ridpath Condo Live Work

514 W. 1st Ave Unit 1 & 2 , Spokane WA 99201

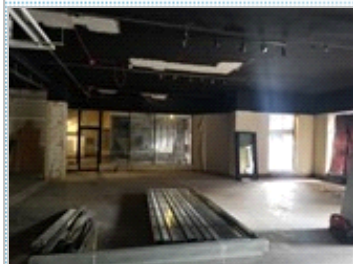
MLS:202015869 PRICE:\$475,000.00



Sqft: 4330

PROPERTY DESCRIPTION:

Main floor commercial condominium space in the Historic Downtown Ridpath. Located in the heart of the City of Spokane near a variety of amenities. Multiple Permitted Uses allowed including General Retail, Office and Live & Work Scenario. Open shell floor plan with new improvements. FEATURES: Parcel #â€™S: 35191.7101 / 35191.7102 4,330 +/- SF Main Floor Suite DTC Zoning, Many Permitted Uses High Visibility and Heavily Windowed Suite Near Parking Lots, Garages and Street Parking Easy I-90 access near a variety of Downtown amenities Historic Ridpath Lobby and Common Area



[FIND MORE](#)

[VIEW PDF](#)

[SEND TO CLIENTS](#)

Gene Arger

G. Arger Co. Real Estate Inc.

Phone: 509.844.8814

DRE#: 87101

ggarger@argerco.com



All information deemed reliable but not guaranteed.