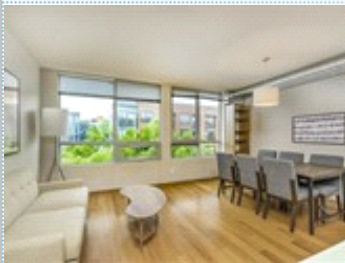


Immaculate condo in the heart of Capitol Hill

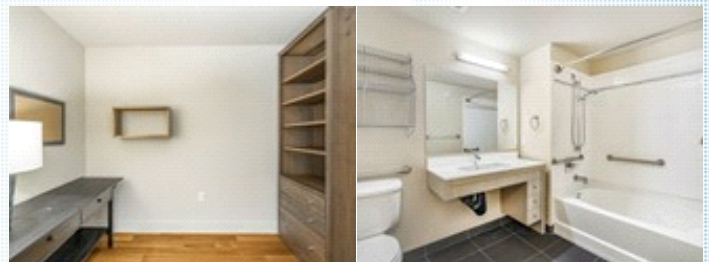
Motivated Seller!

530 Broadway E , #502 , Seattle WA 98102



MLS: 1588369

PRICE: \$731.36/SF

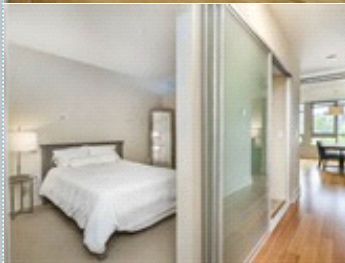


Bedrooms: 1
Full Baths: 1
HOA: 483
Sqft: 778

Subdivision: Brix
Year Built: 2007
Parking: 1 Car
Floors: 1

PROPERTY FEATURES:

- High/Vaulted ceiling
- Living room
- Dishwasher
- Microwave
- Washer
- Balcony, Deck, or Patio
- Hardwood floor
- Bonus/Rec room
- Refrigerator
- Granite countertop
- Dryer
- Tile floor
- Dining room
- Stove/Oven
- Stainless steel appliances
- Laundry area - inside



PROPERTY DESCRIPTION:

Don't miss out this immaculate condo located in the heart of Capitol Hill. Hardwood floors & kitchen with SS appliances & granite countertop. Floor to ceiling windows with west side exposure. Sizable walk-in closet and spacious den/office or can be guest's bedroom. One of the only two ADA unit in the complex and in-unit W/D. Rooftop deck with stunning



[VIEW MAP](#)

[VIEW PDF](#)

[SEND TO CLIENTS](#)



Phuc Tran
Skyline Properties, Inc.
Phone: 253.520.3780
Mobile: 206.427.9229
Fax: 253.520.3785
ptgia999@yahoo.com
[My Website](#)



All information deemed reliable but not guaranteed.