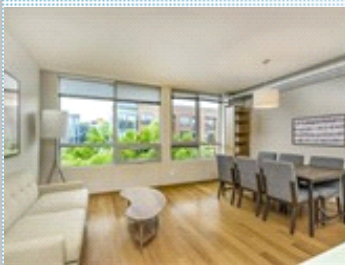


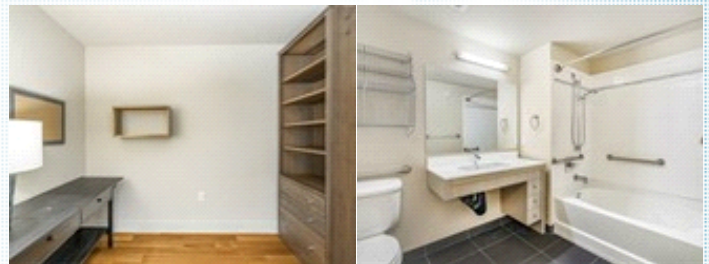
Immaculate condo in the heart of Capitol Hill

530 Broadway E , #502 , Seattle WA 98102



MLS: 1588369

PRICE: \$744.22/SF

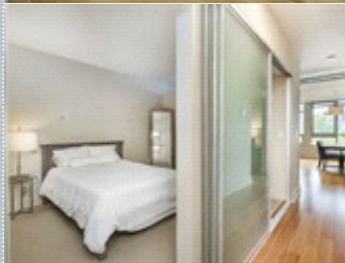


Bedrooms: 1
Full Baths: 1
HOA: \$598
Sqft: 778

Subdivision: Brix
Year Built: 2007
Parking: 1 Car
Floors: 1

PROPERTY FEATURES:

- ✦ High/Vaulted ceiling
- ✦ Living room
- ✦ Dishwasher
- ✦ Microwave
- ✦ Washer
- ✦ Balcony, Deck, or Patio
- ✦ Hardwood floor
- ✦ Bonus/Rec room
- ✦ Refrigerator
- ✦ Granite countertop
- ✦ Dryer
- ✦ Tile floor
- ✦ Dining room
- ✦ Stove/Oven
- ✦ Stainless steel appliances
- ✦ Laundry area - inside



PROPERTY DESCRIPTION:

Don't miss out this immaculate condo located in the heart of Capitol Hill. Hardwood floors & kitchen with SS appliances & granite countertop. Floor to ceiling windows with west exposure. Sizable walk-in closet and spacious den/office or can be guest's bedroom. One of the only two ADA unit in the complex and in-unit W/D. Rooftop deck with stunning city skyline and mountain views. Secure parking and private storage. Pets friendly and steps away from shopping, restaurants, gyms, parks, and light rail.



[VIEW MAP](#)

[VIEW PDF](#)

[SEND TO CLIENTS](#)



Phuc Tran
Skyline Properties, Inc.
Phone: 253.520.3780
Mobile: 206.427.9229
Fax: 253.520.3785
ptgia999@yahoo.com
[My Website](#)



All information deemed reliable but not guaranteed.