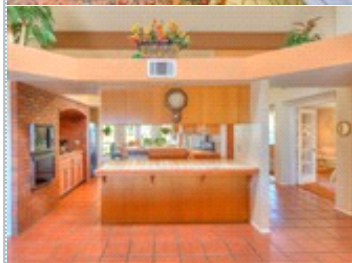
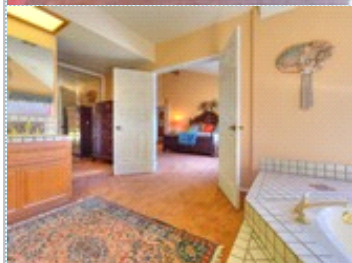
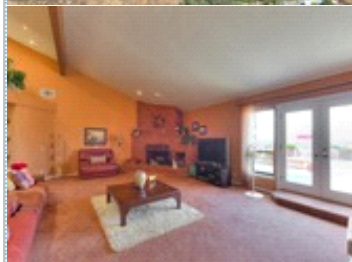


## 3100 Square foot Custom Home on over 2 Acre View

Don't Miss This Unique Estate priced at \$674,980.

18056 GLENNEL DR , 18056 Glennel Dr , Riverside CA 92508

MLS: tr19214929    PRICE: \$674,980.00



Bedrooms: 3  
Year Built: 1985  
Parking: 3 Cars  
Floors: 1

Full Baths: 3  
Lot Size: 104108  
Sqft: 3112

### PROPERTY FEATURES:

- ❑ Central A/C
- ❑ Family room
- ❑ Breakfast nook
- ❑ Stove/Oven
- ❑ Dryer
- ❑ Central heat
- ❑ Living room
- ❑ Dishwasher
- ❑ Microwave
- ❑ Laundry area - inside
- ❑ Fireplace
- ❑ Dining room
- ❑ Refrigerator
- ❑ Washer

### OTHER FEATURES:

- ❑ FRENCH DOORS
- ❑ SEPARATE BUILDING PAD
- ❑ 3 CAR GARAGE +
- ❑ LARGE PATIOS
- ❑ RV SPACE
- ❑ NEWER FORCED AIR UNITS

### PROPERTY DESCRIPTION:

BACK ON MARKET- A CUSTOM BUILT PRIVATE ESTATE WITH A PANORAMIC VIEW THAT EXTENDS FOR MILES & MILES, WITH WINDOWS & FRENCH DOORS IN WHICH TO ABSORB THE ENORMOUS VIEWS & VISTAS .. RESTING ON OVER 2 ACRES OF OF HORSE PROPERTY OFFERS A MASSIVE GREAT ROOM WITH A BRICK FIREPLACE, LARGE BEDROOMS & MASTER SUITE FOR YOUR COMFORT..AND WELL APPOINTED KITCHEN

[FIND MORE](#)   [VIEW MAP](#)   [VIEW PDF](#)   [SEND TO CLIENTS](#)   [VIRTUAL TOUR](#)



**LARRY BLACK**  
HERITAGE REAL ESTATE  
Phone: 951.312.4609  
Mobile: 951.312.4609  
Fax: 866.521.4558  
BRE#: 00674504  
[larry@larrymblack.com](mailto:larry@larrymblack.com)  
[My Website](#)

