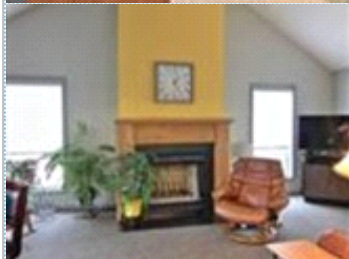
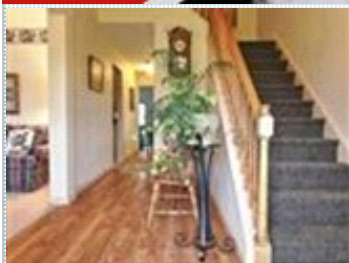
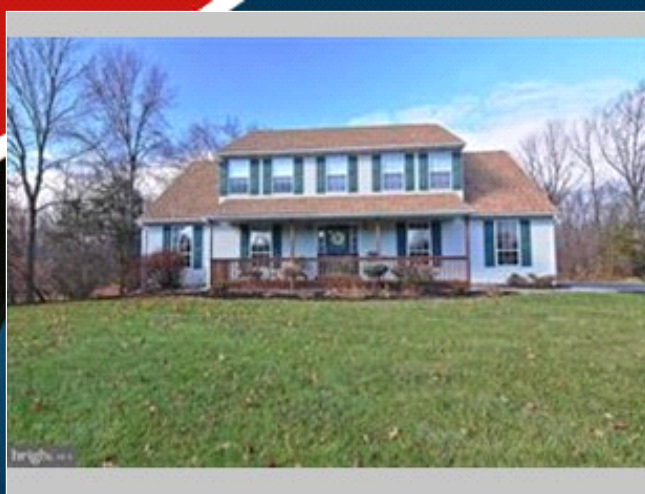


# OPEN HOUSE



## Custom Built Home in a Great Location!!

Open House - Sunday 1/26 - 1pm-3pm

136 Pinehurst Way , Gilbertsville PA 19525

MLS:PAMC635776    PRICE:\$349,900.00

Bedrooms: 4  
Full Baths: 2  
Half Baths: 1  
Parking: 4 Cars  
Floors: 2

Subdivision: Middle Creek Estates  
Year Built: 1994  
Lot Size: 28631  
Sqft: 2747

### PROPERTY FEATURES:

- ❑ Central A/C
- ❑ High/Vaulted ceiling
- ❑ Family room
- ❑ Office/Den
- ❑ Refrigerator
- ❑ Granite countertop
- ❑ Laundry area - inside
- ❑ Central heat
- ❑ Walk-in closet
- ❑ Living room
- ❑ Dining room
- ❑ Stove/Oven
- ❑ Attic
- ❑ Balcony, Deck, or Patio
- ❑ Fireplace
- ❑ Tile floor
- ❑ Bonus/Rec room
- ❑ Dishwasher
- ❑ Microwave
- ❑ Basement
- ❑ Yard

### PROPERTY DESCRIPTION:

Situated on a gorgeous lot offering an abundance of privacy. A large inviting front porch, private rear deck, 2 Car Garage, finished basement. Beautiful family room with vaulted ceilings and fireplace. Also offers tons of storage. All bedrooms offer walk-in closets. Modern kitchen with granite counters. Make this home yours today!!!

[FIND MORE](#)

[VIEW PDF](#)

[SEND TO CLIENTS](#)



**Kristi Ledford**  
The Real Estate Professionals, Inc.  
Phone: 610.326.6900  
Mobile: 610.476.3495  
Fax: 610.970.6315  
[wearethepros@aol.com](mailto:wearethepros@aol.com)  
[www.therepros.com](http://www.therepros.com)



All information deemed reliable but not guaranteed.