

COMING SOON



## Coming Soon!

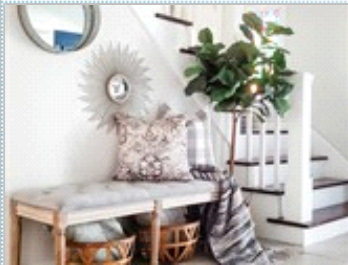
Space, Location and Updates!

10245 Switzer Road , Overland Park KS 66212



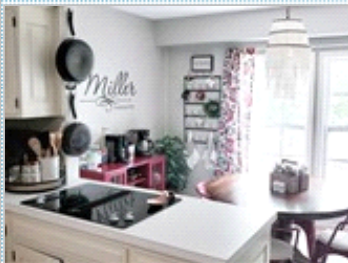
Bedrooms: 5  
Full Baths: 3  
Half Baths: 2  
Parking: 2 Cars  
Floors: 3

Subdivision: Hanover South  
Year Built: 1977  
Lot Size: 11283  
Sqft: 3621



### PROPERTY FEATURES:

- Central A/C
- Walk-in closet
- Family room
- Breakfast nook
- Microwave
- Balcony, Deck, or Patio
- Fireplace
- Hardwood floor
- Bonus/Rec room
- Dishwasher
- Basement
- Yard
- High/Vaulted ceiling
- Tile floor
- Dining room
- Stove/Oven
- Laundry area - inside



### OTHER FEATURES:

- Quartz Counters
- Walk Out
- New Backsplash
- New Deck

### PROPERTY DESCRIPTION:

Happy New Year! Prepare for space, location and updates! This 1.5 story, 5 bedroom walk-out in established neighborhood is full of charm and character. New backsplash and quartz countertops in kitchen, new quartz counters in half baths, new deck and so much more! See the extensive list of updates and put this one at the top of your must-see list!

[VIEW PDF](#)

[SEND TO CLIENTS](#)



**Gina Walton**  
Keller Williams Realty Partners,  
Inc.  
Phone: 913.906.5400 Ext.4046  
Mobile: 913.449.1950  
Fax: 913.744.2746  
[gina@ginawalton.com](mailto:gina@ginawalton.com)  
[www.ginawalton.com](http://www.ginawalton.com)



All information deemed reliable but not guaranteed.