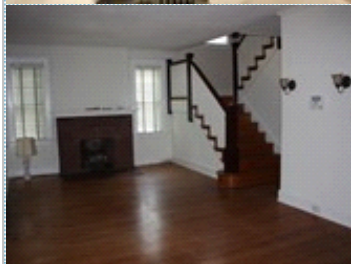
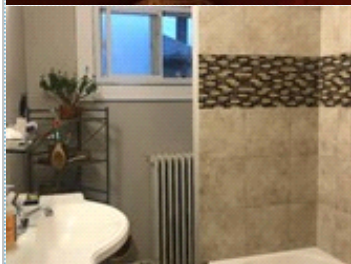
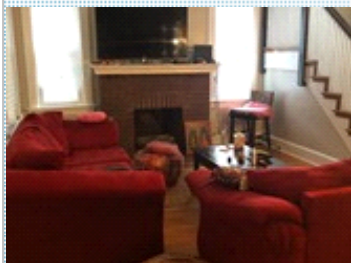


Historic Fairmount, Make it Your Home

BEST OFFER.. MUST SELL NOW..

1801 Chelsea Road , Baltimore MD 21216

MLS:MDBA484402 PRICE:\$222,000.00



Bedrooms: 4
Full Baths: 2
Lot Size: 21522
Sqft: 1984

Subdivision: Fairmont
Year Built: 1920
Parking: 1 Car
Floors: 3

PROPERTY FEATURES:

- ✦ High/Vaulted ceiling
- ✦ Living room
- ✦ Breakfast nook
- ✦ Attic
- ✦ Dryer
- ✦ Yard
- ✦ Hardwood floor
- ✦ Office/Den
- ✦ Refrigerator
- ✦ Basement
- ✦ Laundry area - inside
- ✦ Tile floor
- ✦ Dining room
- ✦ Microwave
- ✦ Washer
- ✦ Balcony, Deck, or Patio

OTHER FEATURES:

- ✦ Detached Garage
- ✦ Updated Baths
- ✦ Neighborhood Association
- ✦ Butler's Pantry
- ✦ Warp Around Porch
- ✦ Radiant Heat
- ✦ Water & Sewer Lines Replaced
- ✦ New Hot Water Heater
- ✦ Bonus Offered

PROPERTY DESCRIPTION:

Welcome to Fairmont. One of Baltimore's oldest & most charming communities. Tucked away in a beautiful park setting where you're close to everything "City" without the stress. Chelsea is well maintained, wood floors, high ceilings, updated baths. Great space with room to improve. High price reduction. Being sold "As Is". Seller is willing to negotiate!

[VIEW MAP](#)

[VIEW PDF](#)

[SEND TO CLIENTS](#)



Cora Berry
Real Estate Professionals, Inc
Phone: 410.918.9740
Mobile: 410.804.9436
Fax: 410.741.3308
cberry410@aol.com



All information deemed reliable but not guaranteed.