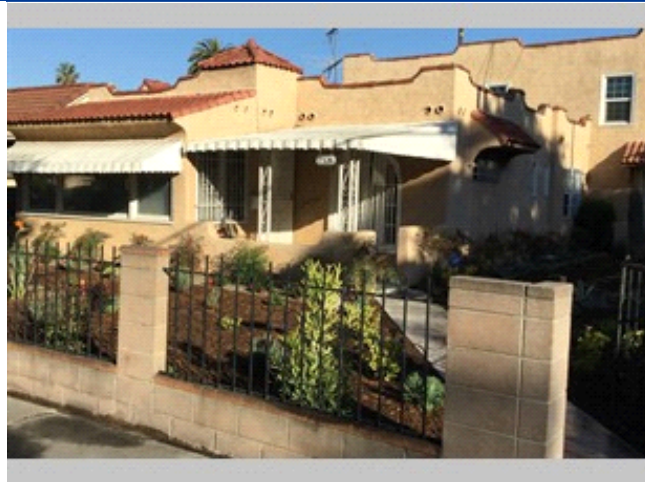


# Coming Soon!



## Character Duplex

Tremendous Upside Potential

2326 Orange Drive , Los Angeles CA 90016

MLS: Coming Soon    PRICE: \$799,000.00

Bedrooms: 3  
Year Built: 1924  
Lot Size: 6000  
Sqft: 2512

Full Baths: 2  
Half Baths: 1  
Parking: 1 Car  
Floors: 2

### PROPERTY FEATURES:

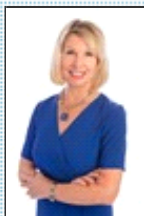
- Tile floor
- Living room
- Office/Den
- Stove/Oven
- Balcony, Deck, or Patio
- Yard

### PROPERTY DESCRIPTION:

A duplex with the original character and charm that tenants love. Update the kitchens and baths to improve the value and rents. Mid-City Neighborhood with renovated homes, duplexes. One story Front unit has 2 bed, den, 1 1/2 baths. 2 story Back unit has 1 bed, den, 1 bath. Newer electrical. Under Rent Control. Located near Culver City & Mid-Wilshire.

[VIEW PDF](#)

[SEND TO CLIENTS](#)



Jennie Manders  
Dilbeck Real Estate  
Phone: 818.949.7830  
Mobile: 818.321.3162  
BRE#: 00843100  
[jennie@jenniemanders.com](mailto:jennie@jenniemanders.com)  
[My Website](#)



All information deemed reliable but not guaranteed.