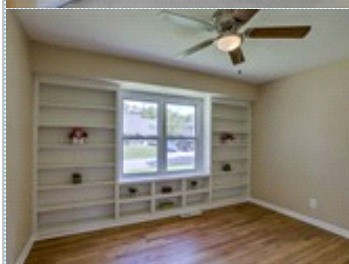
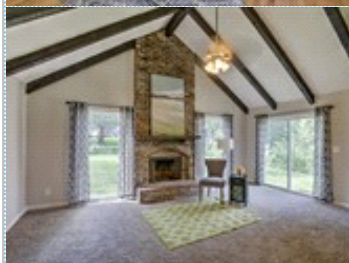
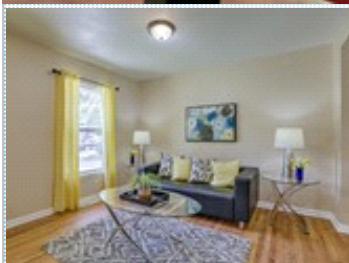




Fall...in Love with this completely redone home!

13512 Belmeade Avenue , Grandview MO 64030

MLS:2188934 PRICE:\$195,000.00



Bedrooms: 3
Full Baths: 3
Lot Size: 10811
Sqft: 2503

Subdivision: Meadowmere
Year Built: 1960
Parking: 1 Car
Floors: 1

PROPERTY FEATURES:

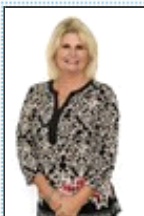
- ❑ Central A/C
- ❑ Walk-in closet
- ❑ Family room
- ❑ Office/Den
- ❑ Stove/Oven
- ❑ Stainless steel appliances
- ❑ Yard
- ❑ Central heat
- ❑ Hardwood floor
- ❑ Living room
- ❑ Dining room
- ❑ Microwave
- ❑ Basement
- ❑ High/Vaulted ceiling
- ❑ Tile floor
- ❑ Bonus/Rec room
- ❑ Dishwasher
- ❑ Granite countertop
- ❑ Balcony, Deck, or Patio

PROPERTY DESCRIPTION:

Lots to see in this beautifully remodeled "true ranch" home with 2,503 sq ft of living space. New interior/ext paint, thermal windows, light fixtures throughout. Kitchen with new cabinets, stainless steel appliances, tile flooring. All bathrooms remodeled. 2nd living quarters downstairs with private entry, includes 2 non-conforming bedrms.

[VIEW PDF](#)

[SEND TO CLIENTS](#)



sandy herrick
ReeceNichols- College Blvd
Phone: 913.205.4333
Mobile: 913.205.4333
Fax: 913.981.2550
sherrick@reecenichols.com



REAL ESTATE
PROFESSIONAL
TITLE
INSURANCE



All information deemed reliable but not guaranteed.