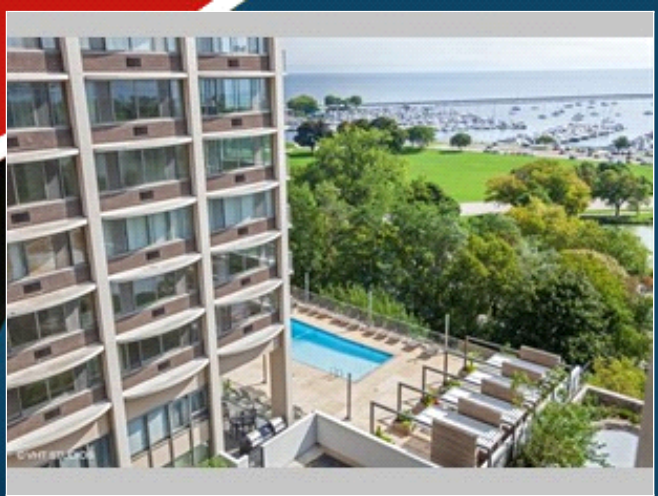


COMING SOON

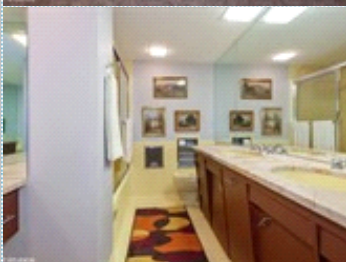
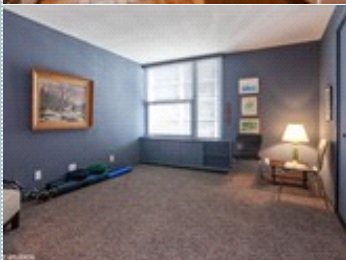
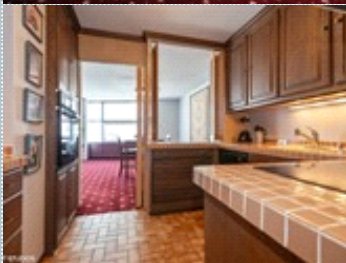
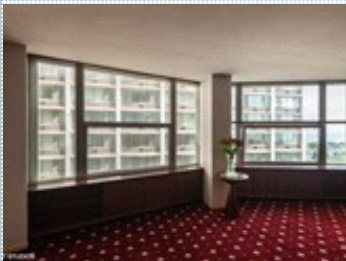


2 Bedroom at The Newport Coops with Lake Views!

\$189,000 - Best deal on the Lake!

1610 N Prospect Ave, #804 , Milwaukee WI 53202

MLS:1660594 PRICE:\$189,000.00



Bedrooms: 2
Full Baths: 2
Sqft: 1500

Subdivision: The Newport
Parking: 1 Car

PROPERTY FEATURES:

- Central A/C
- Central heat
- Walk-in closet
- Dining room
- Dishwasher
- Refrigerator
- Stove/Oven
- Microwave

OTHER FEATURES:

- Guest Suite
- Fabulous roof-top deck
- Door person
- Valet parking
- In-house maintenance crew
- Steps from local amenities

PROPERTY DESCRIPTION:

Don't miss this well-maintained, classic mid-century modern unit with gorgeous views of Lake Michigan! This two-bedroom boasts generously proportioned rooms, plenty of closet space, and a master bedroom with an en suite bathroom with marble countertops. Full-service building with fabulous amenities. CASH ONLY. No pets. Showings start Friday, 9/27.

[FIND MORE](#) [VIEW MAP](#) [VIEW PDF](#) [SEND TO CLIENTS](#) [VIRTUAL TOUR](#)



Erin Joslyn
Coldwell Banker
Phone: 914.215.4797
Mobile: 914.215.4797
erin.joslyn@cbexchange.com



All information deemed reliable but not guaranteed.