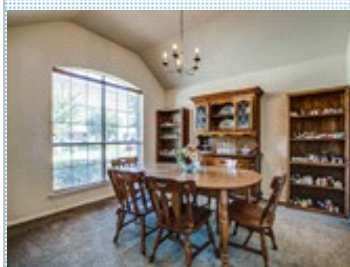




Quiet neighborhood near down-town Wylie!

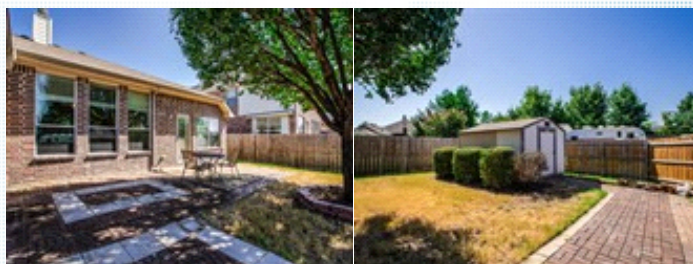
Great house, great price!

205 Edison Lane , Wylie TX 75098



MLS: 14162075

PRICE: \$269,900.00



Bedrooms: 3
Full Baths: 2
HOA: None
Parking: 2 Cars
Floors: 1

Subdivision: Meadowview Estates
Year Built: 2005
Lot Size: .19 AC
Sqft: 2042

PROPERTY FEATURES:

- ☑ Central A/C
- ☑ High/Vaulted ceiling
- ☑ Family room
- ☑ Breakfast nook
- ☑ Stove/Oven
- ☑ Laundry area - inside
- ☑ Central heat
- ☑ Walk-in closet
- ☑ Living room
- ☑ Dishwasher
- ☑ Microwave
- ☑ Balcony, Deck, or Patio
- ☑ Fireplace
- ☑ Tile floor
- ☑ Dining room
- ☑ Refrigerator
- ☑ Stainless steel appliances
- ☑ Yard

OTHER FEATURES:

- ☑ Near highway access 78
- ☑ Near downtown Wylie!
- ☑ Near J Scott Memorial Park
- ☑ Near Mead View Estates Park
- ☑ Excellent Wylie ISD schools!
- ☑ Click 'Find More' link below
- ☑ Click 'Virtual Tour' link!

PROPERTY DESCRIPTION:

Great curb appeal & move-in ready! In 2016-new roof, new low-e/double pane windows, new gutters, new carpet, new HVAC. Open floorplan w vaulted ceilings; modern fixtures & neutral color scheme. Lrg kitchen with SS appliances, lots of 42-in cabinets & granite-look w wood trim counters, pantry, and breakfast bar. Excellent schools near downtown Wylie!



[FIND MORE](#) [VIEW MAP](#) [VIEW PDF](#) [SEND TO CLIENTS](#) [VIRTUAL TOUR](#)