



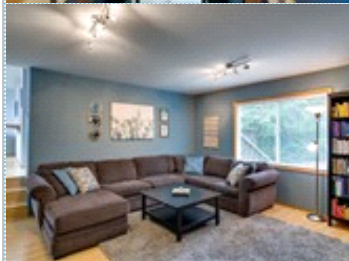
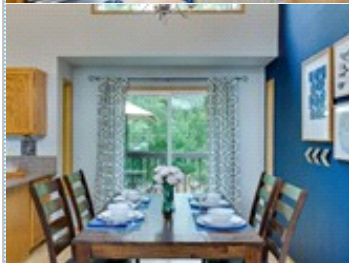
JUST LISTED



Beautiful, turn-key Lakeridge home

10738 68th Place S , Seattle WA 98178

MLS:1471649 PRICE:\$549,950.00



Bedrooms: 3
Year Built: 1987
HOA: 17
Parking: 2 Cars
Floors: 3

Full Baths: 2
Half Baths: 1
Lot Size: 5760
Sqft: 1610

PROPERTY FEATURES:

- Central A/C
- High/Vaulted ceiling
- Dining room
- Stove/Oven
- Washer
- Balcony, Deck, or Patio
- Central heat
- Family room
- Dishwasher
- Microwave
- Dryer
- Yard
- Fireplace
- Living room
- Refrigerator
- Stainless steel appliances
- Laundry area - inside

OTHER FEATURES:

- Double pane vinyl windows
- Master suite
- Updated light fixtures
- Backyard shed

PROPERTY DESCRIPTION:

Wonderful, well-cared-for, turnkey home w/an excellent floor plan & AC. A seamless combo of open & separated spaces w/ room for everyone to spread out. Exceptional light w/vaulted ceilings & big windows. Spacious kitchen w/quartz counters & SS appliances. Master bedroom w/own bath. Beautiful LR w/cozy FP + large family room. Deck off kitchen for easy outdoor dining. Great storage. Private, level, park-like yard adjacent to lush greenbelt. Nice location on quiet, cul-de-sac. A definite must-see!

[VIEW PDF](#)

[SEND TO CLIENTS](#)



John Lough
Windermere Real Estate
Shoreline
Phone: 206.387.5777
Mobile: 206.387.5777
Fax: 206.546.5741
johnlough@windermere.com

Windermere
REAL ESTATE



All information deemed reliable but not guaranteed.