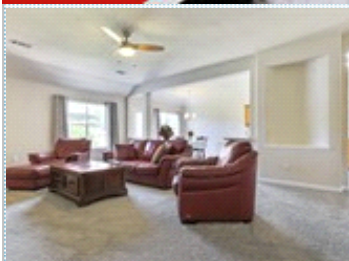


FOR SALE



Extensive updates. Freshly painted. Move-in ready

Open plan living & dining. Study. Light and Bright

3210 Stratford Pointe Dri , Sugar Land TX 77498

MLS:593523 PRICE:\$229,900.00



Bedrooms: 3
Full Baths: 2
HOA: Stratford Park
Sqft: 2001

Subdivision: Stratford Park Village
Year Built: 2001
Parking: 2 Cars
Floors: 1

PROPERTY FEATURES:

- ❑ Central A/C
- ❑ Family room
- ❑ Dining room
- ❑ Microwave
- ❑ Balcony, Deck, or Patio
- ❑ Central heat
- ❑ Living room
- ❑ Dishwasher
- ❑ Stainless steel appliances
- ❑ Yard
- ❑ Tile floor
- ❑ Office/Den
- ❑ Stove/Oven
- ❑ Laundry area - inside



PROPERTY DESCRIPTION:

Fresh paint in & out. New tile floors in wet areas. New carpet in living & bedrooms. Open-plan living/dining. Separate study & formal dining off entry. Updated SS appliances. Kitchen open to breakfast & living. Split plan. Master at back of home. Bathrooms updated tile, counters, hardware, lighting, sinks, mirrors. Extended patio. Neat landscaping.



[FIND MORE](#) [VIEW MAP](#) [VIEW PDF](#) [SEND TO CLIENTS](#) [VIRTUAL TOUR](#)



Herma Hayes
RE/MAX Vintage
Phone: 281.376.9900 Ext.1111
Mobile: 281.217.5481
herma@hermahayes.com
[My Website](#)

RE/MAX
Outstanding Agents
Outstanding Results®



All information deemed reliable but not guaranteed.