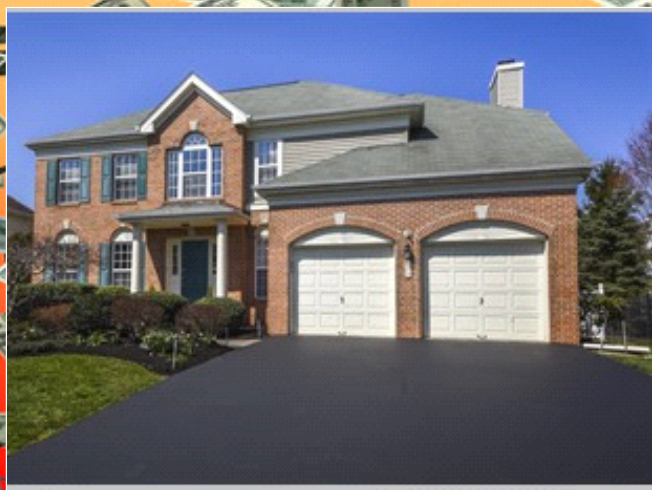


COMMISSION BONUS



\$2,500 Commission Bonus!

With Acceptable Offer by August 31, 2019

808 Yearling Drive , New Hope PA 18938

MLS:PABU443888 PRICE:\$569,900.00



Bedrooms: 4
Full Baths: 2
Half Baths: 1
Lot Size: 8428
Floors: 2

Subdivision: Peddlers View
Year Built: 1997
HOA: \$600/Annually
Sqft: 3358

PROPERTY FEATURES:

- ✦ Central A/C
- ✦ Walk-in closet
- ✦ Dining room
- ✦ Stove/Oven
- ✦ Stainless steel appliances
- ✦ Dryer
- ✦ Central heat
- ✦ Family room
- ✦ Dishwasher
- ✦ Microwave
- ✦ Basement
- ✦ Balcony, Deck, or Patio
- ✦ Fireplace
- ✦ Living room
- ✦ Refrigerator
- ✦ Granite countertop
- ✦ Washer
- ✦ Yard

OTHER FEATURES:

- ✦ New Flooring!
- ✦ Professional Landscaping!
- ✦ Fresh Paint!
- ✦ Newly Sealed Driveway!

PROPERTY DESCRIPTION:

NOW is the time to get your Buyers to see this wonderful home in Peddlers View! Updated kitchen with granite counters, glass-tiled back-splash, SS appliances, center island, breakfast area & rear staircase! Main bedroom offers coffered ceiling, spacious walk-in closet and en suite bath. Covered deck with ceiling fan overlooks fenced in yard!

[VIEW PDF](#)

[SEND TO CLIENTS](#)

[VIRTUAL TOUR](#)



Linda Ventola
RE/MAX Properties, Ltd
Phone: 215.579.3236
Mobile: 215.801.0067
Fax: 215.579.8463
linda@lindaventola.com



All information deemed reliable but not guaranteed.