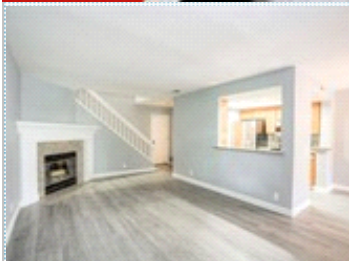


Open House Sat 7/13 & Sun 7/14 from 1-4pm

Pristine Spacious Townhome

6550 Nottingham Place , Dublin CA 94568

MLS: 40873555 PRICE: \$699,000.00



Bedrooms: 3
Full Baths: 2
Half Baths: 1
Parking: 2 Cars
Floors: 2

Subdivision: The Woodlands
Year Built: 1989
HOA: 396/m
Sqft: 1383

PROPERTY FEATURES:

- Central A/C
- Walk-in closet
- Dining room
- Microwave
- Laundry area - garage
- Fireplace
- Tile floor
- Dishwasher
- Granite countertop
- Balcony, Deck, or Patio
- High/Vaulted ceiling
- Living room
- Stove/Oven
- Stainless steel appliances

PROPERTY DESCRIPTION:

Many recent updates including newer interior paint, plantation shutters, newer carpeting upstairs, laminate downstairs, updated lighting and plumbing throughout. Master suite with walk-in closet. Community features scenic grounds, pool and spa. Conveniently located near I-580/I-680 interchange, BART, restaurants and shops.

[FIND MORE](#) [VIEW MAP](#) [VIEW PDF](#) [SEND TO CLIENTS](#) [VIRTUAL TOUR](#)



Scott Fuller
EXP Realty of California, Inc.
Phone: 925.567.6720
BRE#: 01334119
scott@thescottfullerteam.com
[My Website](#)



All information deemed reliable but not guaranteed.