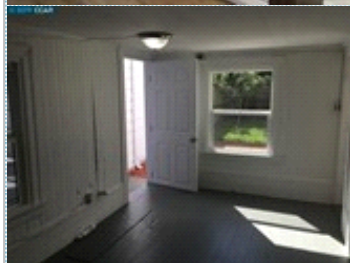
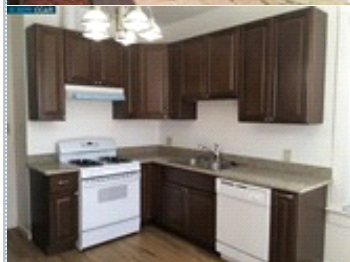
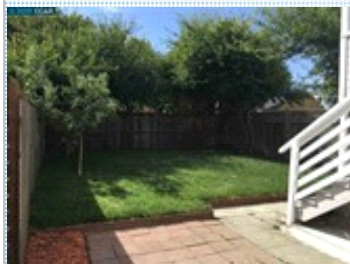


## FULL BASEMENT HOME NEAR WEST OAKLAND BART TREMENDOUS EXPANSION POTENTIAL IN THE BASEMENT

867 WILLOW ST , Oakland CA 94607

MLS: 40870377    PRICE: \$595,000.00



Bedrooms: 3  
Full Baths: 1  
Sqft: 1000

Subdivision: PRESCOTT  
Lot Size: 2766  
Floors: 2

### PROPERTY FEATURES:

- ❑ High/Vaulted ceiling
- ❑ Bonus/Rec room
- ❑ Refrigerator
- ❑ Laundry area - inside
- ❑ Hardwood floor
- ❑ Breakfast nook
- ❑ Stove/Oven
- ❑ Balcony, Deck, or Patio
- ❑ Living room
- ❑ Dishwasher
- ❑ Basement
- ❑ Yard

### OTHER FEATURES:

- ❑ FULL BASEMENT
- ❑ EXPANSION POTENTIAL
- ❑ NEAR BART

### PROPERTY DESCRIPTION:

Lovely full basement Home located in the Prescott District Of Oakland just few blocks from the West Oakland Bart Station. This great Home features: Three bedrooms and one bath upstairs. Full finished basement downstairs with lots of windows and access doors. Tremendous expansion potential in the basement area. Use your imagination on how to use this space. Recently remodeled kitchen and bath, new double pane windows, nice window coverings, refinished hardwood floors. Nice back yard, recently painted inside and outside. Must see to appreciate the great potential of this Home. Great Location close to the West Oakland Bart Station, close to freeway access ramps. Ready To Move-In.

[FIND MORE](#)

[VIEW MAP](#)

[VIEW PDF](#)

[SEND TO CLIENTS](#)



CARLOS GRIFFIN  
BR Realty  
Phone: 888.632.1555  
Mobile: 415.724.5073  
BRE#: 01314675  
[carloshgriffin@yahoo.com](mailto:carloshgriffin@yahoo.com)



All information deemed reliable but not guaranteed.