

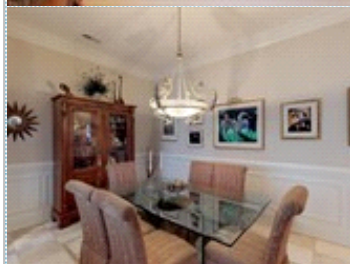
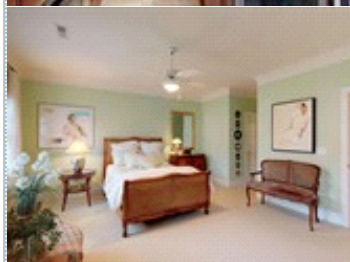
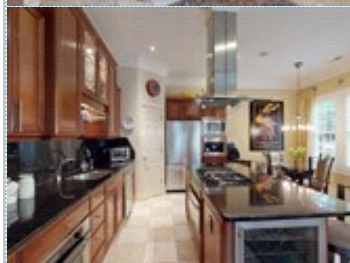
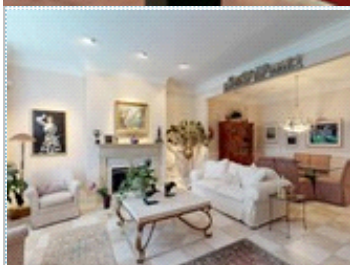


IMMACULATE LUXURY END-UNIT TOWNHOUSE

Burning Tree Subdivision

4408 Mickleton Road , Charlotte NC 28226

MLS: 3479144 PRICE: \$519,900.00



Bedrooms: 3
Full Baths: 3
HOA: \$455/month
Parking: 2 Cars
Floors: 2

Subdivision: Burning Tree
Year Built: 2003
Lot Size: 2701
Sqft: 2518

OTHER FEATURES:

- ✚ Tiles, main floor
- ✚ Carpet, upper floor
- ✚ Plantation shutters
- ✚ Fireplace in LR
- ✚ Cherry kitchen cabinets
- ✚ Decorator's ceiling fixtures
- ✚ Patio with awning
- ✚ More info on VIRTUAL TOUR

PROPERTY DESCRIPTION:

Immaculate full brick end-unit townhome on premium lot in secure, gated community. This home is a blend of luxury and quality. It shows pride of ownership. Decorator's ceiling fixtures convey. Upgrades abound! Community swimming pool. Close proximity to Southpark. Walk to grocery, shops, drugstore and restaurant. More info on 3D VIRTUAL TOUR!

[VIEW MAP](#)

[VIEW PDF](#)

[SEND TO CLIENTS](#)

[VIRTUAL TOUR](#)



Hermann Rupprecht
Engel & Völkers South Charlotte
Phone: 704.500.2266
Mobile: 704.582.2082
herupprecht@aol.com
[My Website](#)



All information deemed reliable but not guaranteed.