

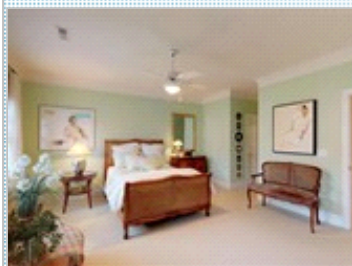
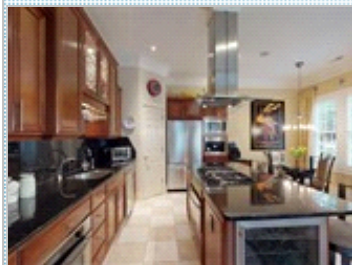
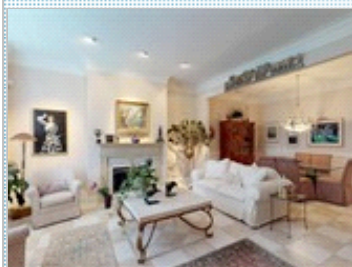


## IMMACULATE LUXURY END-UNIT TOWNHOUSE

Burning Tree Subdivision

4408 Mickleton Road , Charlotte NC 28226

MLS:3479144    PRICE:\$519,900.00



Bedrooms: 3  
Full Baths: 2  
HOA: \$455/month  
Parking: 2 Cars  
Floors: 2

Subdivision: Burning Tree  
Year Built: 2003  
Lot Size: 2701  
Sqft: 2518

### PROPERTY FEATURES:

- ❑ Fireplace
- ❑ Granite countertop
- ❑ Stainless steel appliances
- ❑ Swimming pool

### OTHER FEATURES:

- ❑ Tiles, main floor
- ❑ Carpet, upper floor
- ❑ Plantation shutters
- ❑ Cook's kitchen
- ❑ Cherry kitchen cabinets
- ❑ Decorator's ceiling fixtures
- ❑ Patio with awning
- ❑ More info on VIRTUAL TOUR

### PROPERTY DESCRIPTION:

Immaculate full brick end-unit townhome on premium lot with mature trees and beautiful landscaping. Home shows pride of ownership in this secure gated community. Upgrades abound! Community swimming pool. Close to South Park. Walk to shops, drugstore and restaurants. More info on MLS listing and on 3D VIRTUAL TOUR.

[VIEW MAP](#)

[VIEW PDF](#)

[SEND TO CLIENTS](#)

[VIRTUAL TOUR](#)



**Hermann Rupprecht**  
Engel & Völkers South Charlotte  
Phone: 704.500.2266  
Mobile: 704.582.2082  
[herupprecht@aol.com](mailto:herupprecht@aol.com)  
[My Website](#)

  
**ENGEL & VÖLKERS**



All information deemed reliable but not guaranteed.