

FOR SALE

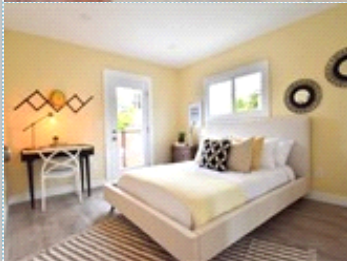


Fabulous Remodeled Duplex

Canyon view lot on quiet Cul-de-Sac street

5013-5015 Cliff Place , San Diego CA 92116

MLS:190025626 PRICE:\$1,065,000.00

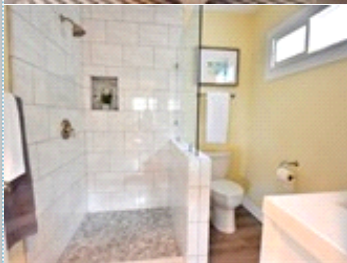


Bedrooms: 3
Year Built: 1926
Parking: 6 Cars

Full Baths: 2
Lot Size: 15707
Sqft: 1600

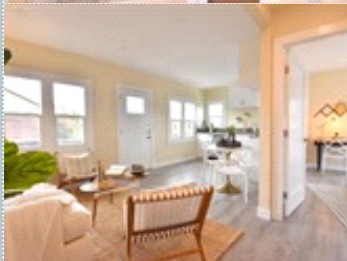
PROPERTY FEATURES:

- Living room
- Stove/Oven
- Stainless steel appliances
- Yard
- Breakfast nook
- Microwave
- Laundry area - inside
- Dishwasher
- Granite countertop
- Balcony, Deck, or Patio



OTHER FEATURES:

- Great Neighborhood
- Projected Rents: \$5,900
- Great Location
- AirBNB or VRBO: \$\$\$
- Walk to Adams Ave



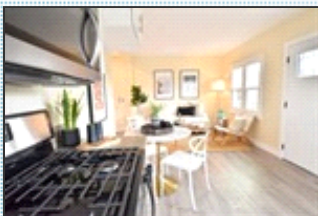
PROPERTY DESCRIPTION:

Investor/Owner Occupant dream duplex on a quiet cul-de-sac with canyon views. Two completely remodeled Craftman homes perched on the canyon ridge with views of Qualcomm. These homes feature NEW: roofs, dual pane windows, electrical, plumbing, hardscape, fences, insulation, kitchens, baths, and private patios with gated yards and laundry facilities.

[VIEW MAP](#)

[VIEW PDF](#)

[SEND TO CLIENTS](#)



Lee Hoff
SoCal Realty Group Inc.
Phone: 619.255.1596
Mobile: 619.861.9501
Fax: 888.554.0038
BRE#: 01012524
loansocal@gmail.com



All information deemed reliable but not guaranteed.