

PRIVATE END UNIT IN PINE HILL AT ERINDALE

Large Patio with Peak Views!

PRICE: \$249,900.00

Bedrooms: 3
Full Baths: 3
Parking: 2 Cars
Floors: 3

Subdivision: Pine Hill In Erindale Park
Half Baths: 1
Sqft: 2177

PROPERTY FEATURES:

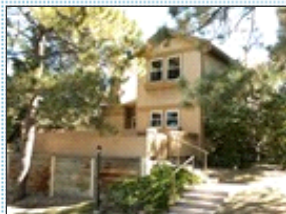
- Central A/C
- High/Vaulted ceiling
- Family room
- Breakfast nook
- Stove/Oven
- Attic
- Balcony, Deck, or Patio
- Central heat
- Walk-in closet
- Living room
- Dishwasher
- Granite countertop
- Basement
- Fireplace
- Tile floor
- Dining room
- Refrigerator
- Stainless steel appliances
- Laundry area - inside

PROPERTY DESCRIPTION:

Best location in the complex with a single family feel. Kitchen features all stainless steel appliances and granite square counter tops. Quiet master suite offers private bath and walk-in closet. Second bedroom upstairs has a tree house feel with a view. Nice loft with built-ins, over sized garage and A/C included! Priced right to sell "AS IS"!!

[VIEW PDF](#)

[SEND TO CLIENTS](#)



Jeanne DeBoe Hacker
The Hearthstone Group
Phone: 719.572.5720
Mobile: 719.330.6055
deboe@comcast.net



All information deemed reliable but not guaranteed.