

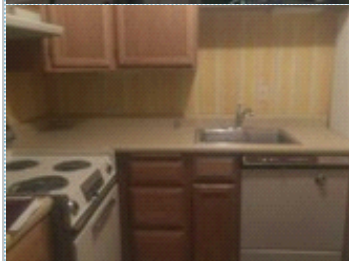
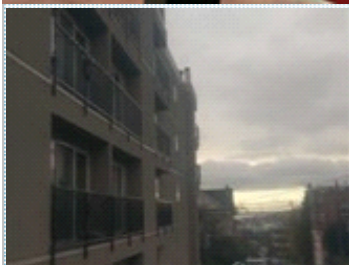


## Reduced Price! Capitol Hill - MLS 1395256

Bring an offer!

511 E. Roy, Unit 302, Seattle WA 98102

MLS: 1395256    PRICE: \$419,000.00



Bedrooms: 1  
Year Built: 1980  
Parking: 1 Car  
Floors: 1

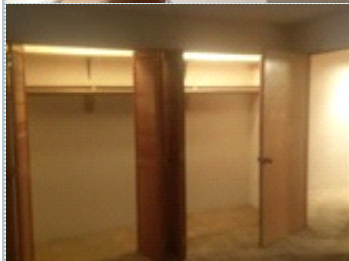
Full Baths: 1  
Lot Size: 24735  
Sqft: 659

### PROPERTY FEATURES:

- ❑ Fireplace
- ❑ Living room
- ❑ Dishwasher
- ❑ Refrigerator
- ❑ Stove/Oven
- ❑ Laundry area - inside
- ❑ Balcony, Deck, or Patio

### PROPERTY DESCRIPTION:

Location, location, location! Quiet condo on the 3rd floor. Unit has one bedroom and bath, kitchen, front room and a balcony. On a clear day you can see the Seattle Center and Space Needle. And the Top Pot doughnuts and two restaurants are right across the street. Huge community area on top floor with view of the skyline and the Center. Enjoy!



[FIND MORE](#)

[VIEW MAP](#)

[VIEW PDF](#)

[SEND TO CLIENTS](#)



### Drew McGougan

Berkshire Hathaway NW Real Estate

Phone: 206.387.6810

Mobile: 206.387.6810

Fax: 206.932.4505

BRE#: 40579

[Email Me](#)

[My Website](#)

**BERKSHIRE  
HATHAWAY**  
HomeServices

Northwest  
Real Estate



All information deemed reliable but not guaranteed.