



New Year, New Low Price!

1700 Adeline Street , Oakland CA 94607

MLS: 41012966 PRICE: \$749,000.00

Bedrooms: 3
Year Built: 1983
Parking: 2 Cars
Floors: 2

Full Baths: 2
Lot Size: 6052
Sqft: 1460

PROPERTY FEATURES:

- ❑ Central heat
- ❑ Living room
- ❑ Stove/Oven
- ❑ Fireplace
- ❑ Dining room
- ❑ Laundry area - inside
- ❑ High/Vaulted ceiling
- ❑ Dishwasher

OTHER FEATURES:

- ❑ Virtually staged

PROPERTY DESCRIPTION:

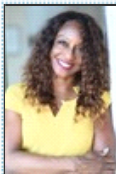
Here's your opportunity to own a beautiful West Oakland home. Ideal location, convenient for commuting. Situated directly across from the historic Defremery Park, this home has grand curb appeal with a 1/2 circular driveway and large palm trees. This home has a modern floor-plan and offers a perfect setting for formal dining and entertaining.

[VIEW MAP](#)

[VIEW PDF](#)

[SEND TO CLIENTS](#)

[VIRTUAL TOUR](#)



Kimberly Cleghorn
KW Advisors
Phone: 510.304.4875
DRE#: 01127550
kim@kimcleghorn.com
www.MetaMoves.com



All information deemed reliable but not guaranteed.