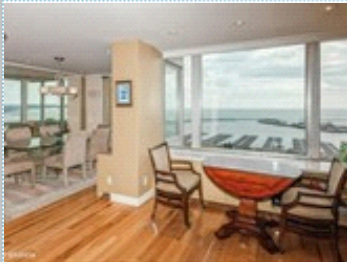


LUXURY LISTING



Top Floor SE corner 2B 2Ba 349900 for CASH buyers

The Newport Co-op's

1610 N Prospect Ave 1505 , Milwaukee WI 53202

MLS:1733715 PRICE:\$349,900.00



Bedrooms: 2
Full Baths: 2
HOA: 1878
Parking: 1 Car
Floors: 5+

Subdivision: The newport Vo-op's
Year Built: 1961
Lot Size: common
Sqft: 1700

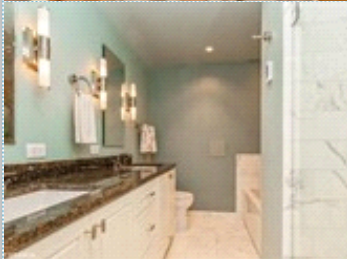
PROPERTY FEATURES:

- Central A/C
- Walk-in closet
- Living room
- Dishwasher
- Microwave
- Central heat
- Hardwood floor
- Dining room
- Refrigerator
- Granite countertop
- High/Vaulted ceiling
- Tile floor
- Breakfast nook
- Stove/Oven
- Stainless steel appliances



OTHER FEATURES:

- Underground parkig
- Guest apartment
- Rooftop deck
- Maintenance person.
- 2nd floor terrace
- Security person up front



PROPERTY DESCRIPTION:

DAZZLED is what you'll be by the breathtaking views from this 15th floor SE corner unit. Enclosed balcony dining area w/million dollar views from all rooms. Gorgeous Hickory floors, Fab open kitchen, extra lighting, Very high-end Ba's w/raised ceiling height, shower stall & tub ; front door security, valet, guest apt., maint person, plus rooftop.

[VIEW PDF](#)

[SEND TO CLIENTS](#)



Larry Weiss & Erin Joslyn
Coldwell Banker Residential
Brokerage

Phone: 414.305.0126

Mobile: 414.305.0126

Fax: 414.963.3018

larry.weiss@cbexchange.com

[My Website](#)



RESIDENTIAL BROKERAGE



All information deemed reliable but not guaranteed.