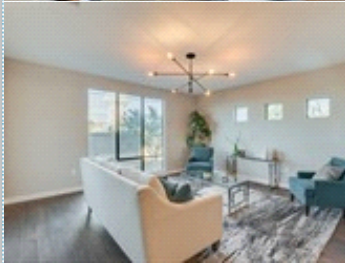
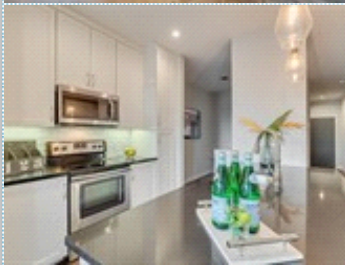
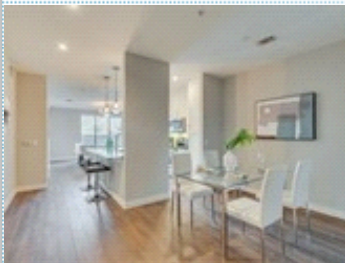


Luxury High Rise Condo

East Dallas University Crossing Neighborhood

5609 SMU Boulevard , Number 211 , Dallas TX 75206

MLS: 14194769 PRICE: \$290,000.00



Bedrooms: 2
Full Baths: 2
HOA: yes
Sqft: 1185

Subdivision: Shelby Residences
Year Built: 2008
Parking: 1 Car
Floors: 2

PROPERTY FEATURES:

- Central A/C
- Living room
- Refrigerator
- Granite countertop
- Central heat
- Dining room
- Stove/Oven
- Stainless steel appliances
- Walk-in closet
- Dishwasher
- Microwave
- Balcony, Deck, or Patio

OTHER FEATURES:

- Near SMU

PROPERTY DESCRIPTION:

Don't miss this rare opportunity to own this lovely boutique condominium for the lowest price per square foot in the building! This condo's floor plan is located on the 2nd floor with one of the largest living spaces in the building, with stainless steel appliances. The Shelby Residences' is 55 boutique condominium homes located in East Dallas' University Crossing Neighborhood. Directly across from Katy Trailhead & steps away from shops, restaurants, & SMU. These homes offer unbeatable convenience for people who love to live stress-free & on the go. Amenities include a rooftop terrace, stylish owners' lounge, fitness center, Dog Park, & sophisticated lobby. Highly motivated seller!

[VIEW MAP](#)

[VIEW PDF](#)

[SEND TO CLIENTS](#)

[VIRTUAL TOUR](#)



John Stahl
 Evolve Realty
 Phone: 214.415.8008
 Mobile: 214.415.8008
 Fax: 469.331.7940
jws25@verizon.net
[My Website](#)

