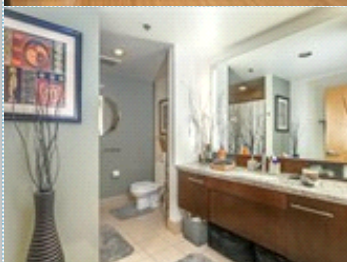
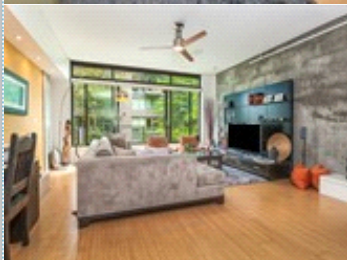
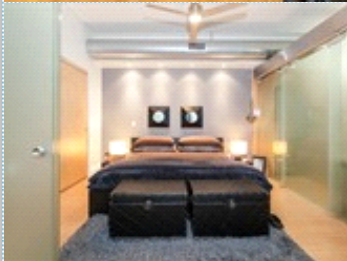
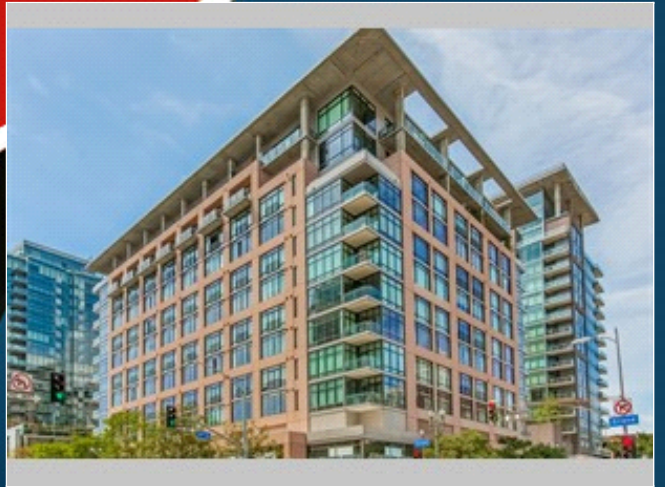


FOR SALE



Exclusive South Park District Park the Car and Walk to Everything!

1111 S. Grand Ave #605 , Los Angeles CA 91605

MLS:19-477084 PRICE:\$715,000.00

Bedrooms: 1
Year Built: 2006
Parking: 1 Car
Floors: 5+

Full Baths: 1
HOA: 755
Sqft: 1100

PROPERTY FEATURES:

- Central A/C
- Dishwasher
- Microwave
- Washer
- Swimming pool
- Central heat
- Refrigerator
- Granite countertop
- Dryer
- Jacuzzi/Whirlpool
- Hardwood floor
- Stove/Oven
- Stainless steel appliances
- Laundry area - inside

OTHER FEATURES:

- Assigned Parking
- Personal Storage

PROPERTY DESCRIPTION:

www.Elleven605.com DTLA South Park 1100sf, over \$40k in upgrades, leed certified bldg, bamboo floors, bedroom separation via 6 panel 1/2" smoked glass sliders, super bright with western wall of floor to ceiling windows, park like, tree-top views, stainless steel appliance package and back splash, granite counter tops, STORAGE at Garage level!

[VIEW MAP](#)

[VIEW PDF](#)

[SEND TO CLIENTS](#)

[VIRTUAL TOUR](#)



Randelle Green
The RandelleGreen Group
Phone: 213.284.2988
Mobile: 213.254.7626
BRE#: 01979673
[Email Me](#)



All information deemed reliable but not guaranteed.