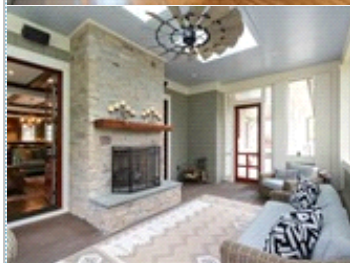
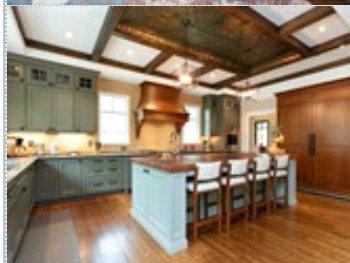
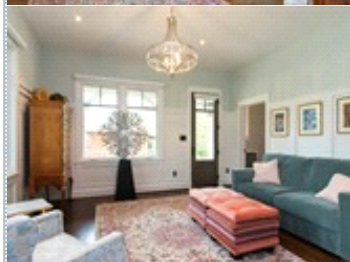
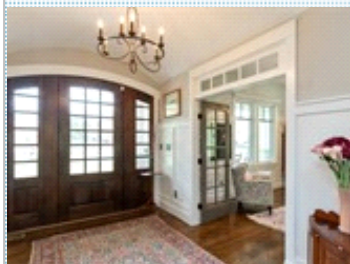


The Wolters Group Presents: A Brokers Open

Tuesday, June 11, 2019 12-2 pm

2236 Whitcomb Place , Falls Church VA 22046

MLS: VAFX1054588



Bedrooms: 6
Year Built: 2018
Lot Size: 28749

Full Baths: 5
Half Baths: 1
Sqft: 6604

PROPERTY FEATURES:

- Central A/C
- High/Vaulted ceiling
- Tile floor
- Bonus/Rec room
- Dishwasher
- Microwave
- Attic
- Dryer
- Yard
- Central heat
- Walk-in closet
- Family room
- Office/Den
- Refrigerator
- Granite countertop
- Basement
- Laundry area - inside
- Fireplace
- Hardwood floor
- Living room
- Dining room
- Stove/Oven
- Stainless steel appliances
- Washer
- Balcony, Deck, or Patio

OTHER FEATURES:

- In Law Suite
- Wrap Around Porch
- Screened in Porch w/ FP

PROPERTY DESCRIPTION:

Custom craftsman built in 2018 with wrap around porch & portico on .66 acres in Falls Church. The attention to detail and quality craftsmanship by it's builder, Thorsen Construction, will surely make you proud to call this HOME! With so many upgrades to mention, this is a home to put on your "must see" list.

[FIND MORE](#) [VIEW MAP](#) [VIEW PDF](#) [SEND TO CLIENTS](#) [VIRTUAL TOUR](#)



Robin Wolters
Coldwell Banker Residential
Brokerage
Phone: 703.691.1400
Mobile: 703.304.6405
Fax: 703.691.4656
Rwolters@cbmove.com
[My Website](#)



GLOBAL
LUXURY

