

High-end Renovation in South Laurel

Over 2,800 sq. ft. of Wonderful Living Space

11806 Montague Dr. , Laurel MD 20708

PRICE: \$399,000.00

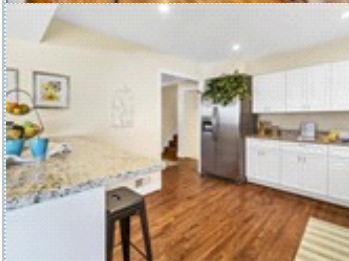


Bedrooms: 4
Full Baths: 3
Parking: 2 Cars

Subdivision: Bedford
Lot Size: .3 acres
Floors: 4

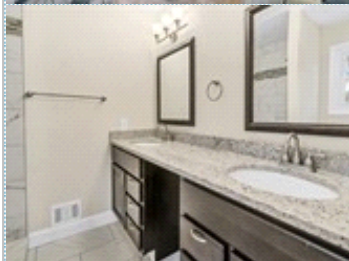
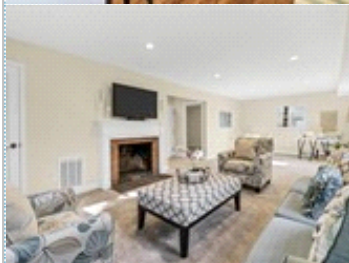
PROPERTY FEATURES:

- Central A/C
- Hardwood floor
- Living room
- Dishwasher
- Microwave
- Basement
- Laundry area - inside
- Central heat
- Tile floor
- Bonus/Rec room
- Refrigerator
- Granite countertop
- Washer
- Yard
- Fireplace
- Family room
- Dining room
- Stove/Oven
- Stainless steel appliances
- Dryer



PROPERTY DESCRIPTION:

This beautiful 4 Level split Home has been completely renovated with high-end finishes and attention to detail to over 2,800 sq. ft. of finished space. As you enter you will be amazed at the gleaming hardwood floors through-out the home. Large kitchen with plenty of cabinet space. Granite counters. Stainless Steel appliances. Enjoy a meal at your dual-sided breakfast bar or in the formal dining room. Large, formal Living room leads down a few steps to a huge Family room with wood burning fireplace. A few more steps down will lead you into a Gigantic 24x24 ft. fully finished basement . You will be amazed at the spaciousness this home has to offer. Great for family and friends to live, entertain and relax! Recessed lights through-out. Large bedrooms. Big Master bedroom with tons of closet space and connected master bath with his and her dual sink vanity and beautiful ceramic tile shower. Lots of light floods the home through new energy efficient windows and sliding glass doors. Huge partially fenced back yard featuring unique, stone terracing landscaping that is sure to impress and great for entertaining. Close to shopping and restaurants. Just a few minutes to BWI AIRPORT. FT. MEADE & NSA. Just minutes to BW Parkway (rt 295), I-95, Rt. 197 & Rt. 1 and LAUREL LAKES & MALL. Walking distance to the Bedford Community Park with walking trails, playground, tennis courts and more! This Home is a must see and priced to sell!



[VIEW MAP](#)

[VIEW PDF](#)

[SEND TO CLIENTS](#)

[VIRTUAL TOUR](#)