



OPEN HOUSE

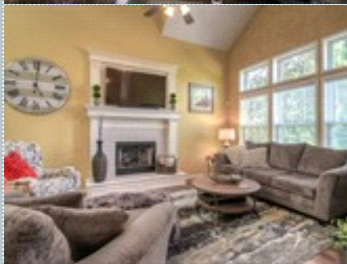
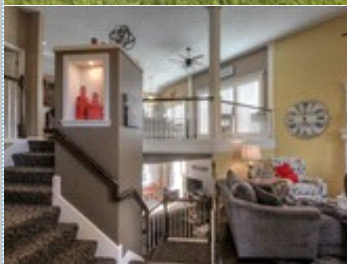


New Listing Open May 30th

Check out this great home between 5-7pm

16221 W 156th Street , Olathe KS 66062

MLS:2048819 PRICE:\$309,500.00



Bedrooms: 4
Full Baths: 3
HOA: \$325
Parking: 3 Cars

Subdivision: Parkside at Arlington Park
Year Built: 2001
Lot Size: 18822
Sqft: 2717

PROPERTY FEATURES:

- Central A/C
- Walk-in closet
- Family room
- Dishwasher
- Stainless steel appliances
- Balcony, Deck, or Patio
- Fireplace
- Hardwood floor
- Living room
- Stove/Oven
- Basement
- Yard
- High/Vaulted ceiling
- Tile floor
- Dining room
- Microwave
- Laundry area - inside

OTHER FEATURES:

- Close to Neighborhood Pool
- HUGE Backyard
- Granite Counter Tops
- Finished Basement
- Two Fireplaces
- Great School District

PROPERTY DESCRIPTION:

One of the best lots in Arlington Park at the end of a cul-de-sac with over 18,000 sf, beautiful landscaping and fully fenced yard! Great outdoor space to enjoy with a deck and covered stamped concrete patio. This home is immaculate inside and out, you won't be disappointed. Popular open floor plan with dark wood floors on the main level, granite counter tops and island, finished walk-out basement and two fireplaces. Subdivision has a salt water pool. Close to Brougham Park, Black Bob Bay and Heritage Park.

[VIEW MAP](#)

[VIEW PDF](#)

[SEND TO CLIENTS](#)



Amy Williams
Keller Williams Realty Partners, Inc.
Phone: 913.909.1861
Fax: 913.744.2895
amy@anyhomeonline.com
[My Website](#)

amy williams



All information deemed reliable but not guaranteed.