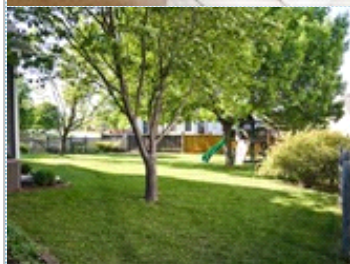
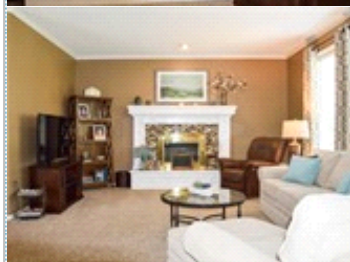
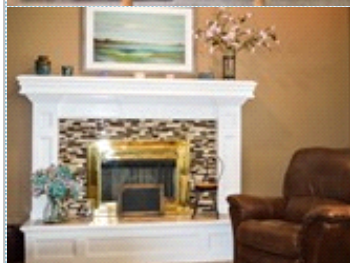


## Wonderful Home on Corner Lot

Fenced Back Yard

14411 S Blackfeather Stre , Olathe KS 66062

MLS: 2045928    PRICE: \$275,000.00



Bedrooms: 4  
Full Baths: 2  
Half Baths: 1  
Lot Size: 11373  
Sqft: 2242

Subdivision: Estates of Ashton  
Year Built: 1997  
HOA: 300  
Parking: 2 Cars  
Floors: 2

### PROPERTY FEATURES:

- ❑ Central A/C
- ❑ Walk-in closet
- ❑ Living room
- ❑ Breakfast nook
- ❑ Microwave
- ❑ Central heat
- ❑ Hardwood floor
- ❑ Office/Den
- ❑ Dishwasher
- ❑ Basement
- ❑ Fireplace
- ❑ Tile floor
- ❑ Dining room
- ❑ Stove/Oven
- ❑ Laundry area - inside

### PROPERTY DESCRIPTION:

Fabulous home with open floor plan invites you to entertain friends and family with the spacious kitchen with breakfast room. Work from home, your in luck with the first floor home office. Large master suite and walk in closet with his and her vanities. Secondary rooms are spacious with plenty of room for guests and kiddos. Home is light and bright

[VIEW MAP](#)

[VIEW PDF](#)

[SEND TO CLIENTS](#)



**Brett Wood**  
Keller Williams Diamond Partners Inc  
Phone: 913.322.7477  
Mobile: 913.568.4709  
Fax: 913.322.8332  
[brett.wood@kw.com](mailto:brett.wood@kw.com)  
[My Website](#)



All information deemed reliable but not guaranteed.