

Join in the fun of living on the Eastside

Walk Score 93

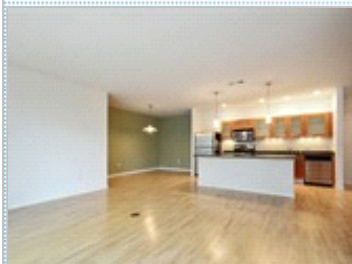
1522 N Prospect Ave #304 , Milwaukee WI 53202

MLS:1528909 PRICE:\$315,000.00



Bedrooms: 2
Full Baths: 2
HOA: 580
Parking: 1 Car

Subdivision: 1522 on the Lake
Year Built: 2003
Lot Size: common
Sqft: 1,491



PROPERTY FEATURES:

- ☑ Central A/C
- ☑ Hardwood floor
- ☑ Dining room
- ☑ Stove/Oven
- ☑ Washer
- ☑ Balcony, Deck, or Patio
- ☑ Central heat
- ☑ Tile floor
- ☑ Dishwasher
- ☑ Microwave
- ☑ Dryer
- ☑ High/Vaulted ceiling
- ☑ Living room
- ☑ Refrigerator
- ☑ Stainless steel appliances
- ☑ Laundry area - inside

OTHER FEATURES:

- ☑ Concierge
- ☑ Community Room
- ☑ Guest Apartment
- ☑ Lakeside Terrace
- ☑ Fitness Center

PROPERTY DESCRIPTION:

Wow! Checkout the square footage! This 2Br 2Ba condo with views of the Lake and marina offers amenities galore. Desirable floor plan with separate guest suite wing. Sunsets from your balcony, underground heated parking space, in unit laundry, large kitchen with SS appliances, breakfast counter & separate dining area. This sought after pet friendly building also offers "blue ribbon" concierge service, fitness center, community room, guest suite, and beautiful 2nd fl terrace. Home Warranty included.

[FIND MORE](#)

[VIEW PDF](#)

[SEND TO CLIENTS](#)



Larry Weiss
Coldwell Banker Residential
Brokerage
Phone: 414.305.0126
Mobile: 414.305.0126
Fax: 414.963.3018
larry.weiss@cbexchange.com
[My Website](#)

