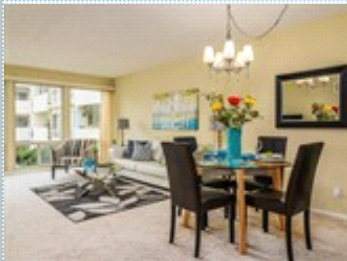


# Beachfront Property



**Open Sunday 2-4:30**

Spacious balcony with view of Bay

1825 Shoreline Drive #210 , Alameda CA 94501

MLS: 40776967    PRICE: \$629,000.00



Bedrooms: 2  
Year Built: 1968  
Parking: 1 Car  
Floors: 1

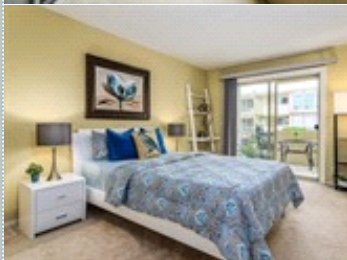
Full Baths: 2  
HOA: 363.00  
Sqft: 871

#### PROPERTY FEATURES:

- Tile floor
- Dishwasher
- Refrigerator
- Stove/Oven
- Balcony, Deck, or Patio
- Swimming pool
- Jacuzzi/Whirlpool

#### OTHER FEATURES:

- Partial view of SF Bay
- Wall to wall carpeting



#### PROPERTY DESCRIPTION:

Sophisticated, light-filled, spacious condo, open floor plan. Living room and both bedrooms access balcony with view of community pool and partial view of the Bay. Updated kitchen and bathrooms. Just steps away from the beach, walking distance to shopping, and convenient to public transportation to SF or Oakland China town.



[VIEW MAP](#)

[VIEW PDF](#)

[SEND TO CLIENTS](#)

[VIRTUAL TOUR](#)



**Angela McIntyre**  
Alain Pinel Realtors  
Phone: 510.809.1111  
Fax: 510.377.7733  
BRE#: 01336121  
[amcintyre@apr.com](mailto:amcintyre@apr.com)



All information deemed reliable but not guaranteed.