

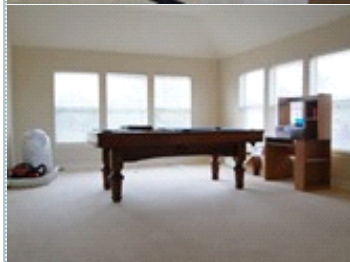
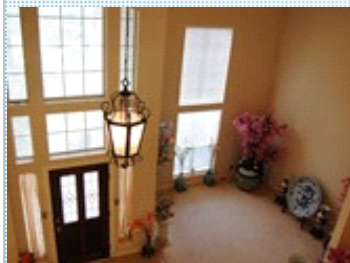
Great Opportunity in Shadow Creek

Beautiful house with two masters down and a pool

2318 Delta Bridge Dr. , Pearland TX 77584

MLS: 49558401

PRICE: \$359,900.00



Bedrooms: 5
Full Baths: 4
HOA: Shadow Creek HOA
Parking: 2 Cars
Floors: 2

Subdivision: Shadow Creek
Year Built: 2004
Lot Size: 9861
Sqft: 4076

PROPERTY FEATURES:

- ❑ Central A/C
- ❑ High/Vaulted ceiling
- ❑ Family room
- ❑ Dining room
- ❑ Refrigerator
- ❑ Stainless steel appliances
- ❑ Dryer
- ❑ Swimming pool
- ❑ Central heat
- ❑ Walk-in closet
- ❑ Living room
- ❑ Breakfast nook
- ❑ Stove/Oven
- ❑ Attic
- ❑ Laundry area - inside
- ❑ Fireplace
- ❑ Tile floor
- ❑ Bonus/Rec room
- ❑ Dishwasher
- ❑ Microwave
- ❑ Washer
- ❑ Yard

OTHER FEATURES:

- ❑ Corner lot
- ❑ Swimming pool
- ❑ Five bedrooms
- ❑ Butlers pantry
- ❑ Four complete bathrooms

PROPERTY DESCRIPTION:

Beautiful house on a corner lot. Master bedroom plus another bedroom on-suite down. Three big bedrooms up and game room. This house is NOT A SHORTSALE OR FORECLOSURE. Price has been reduced because it needs TLC. This is a great opportunity for someone who wants a great house at a cheap price.

[VIEW MAP](#)

[VIEW PDF](#)

[SEND TO CLIENTS](#)



Olga Rubio
RE/MAX Metro
Phone: (713) 598.0128
Mobile: (713) 598.0128
orubio@sbcglobal.net

