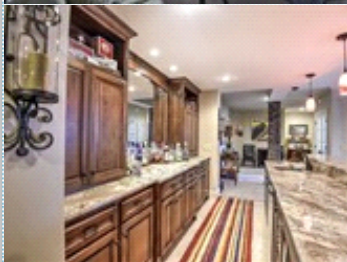
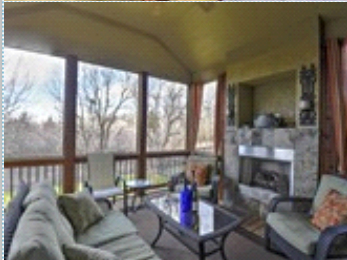
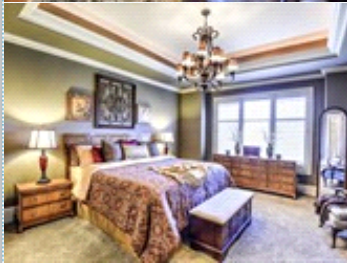
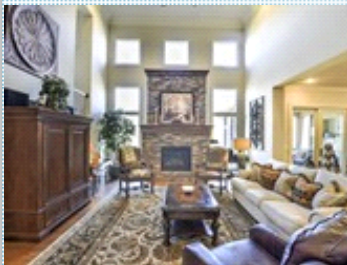


## 1 1/2 STORY STUNNER

BETTER THAN NEW

9410 W 161st Terr , Overland Park KS 66085

MLS:2032652 PRICE:\$659,999.00



Bedrooms: 5  
Full Baths: 4  
Half Baths: 1  
Sqft: 5200

Subdivision: WYNGATE  
Year Built: 2010  
Parking: 3 Cars  
Floors: 3

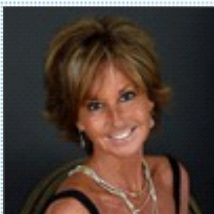
### PROPERTY FEATURES:

- ❑ Central A/C
- ❑ Walk-in closet
- ❑ Family room
- ❑ Dining room
- ❑ Stove/Oven
- ❑ Stainless steel appliances
- ❑ Balcony, Deck, or Patio
- ❑ Fireplace
- ❑ Hardwood floor
- ❑ Bonus/Rec room
- ❑ Breakfast nook
- ❑ Microwave
- ❑ Basement
- ❑ Yard
- ❑ High/Vaulted ceiling
- ❑ Tile floor
- ❑ Office/Den
- ❑ Dishwasher
- ❑ Granite countertop
- ❑ Laundry area - inside

### PROPERTY DESCRIPTION:

SIMPLY STUNNING 1 1/2 STORY, CUSTOM BUILT IN 2007 AND SITUATED ON A PRIVATE LOT BACKING TO ABUNDANT TREES, WILDLIFE AND A TRICKLING STREAM. THIS SPECTACULAR HOME IS BETTER THAN NEW! OPEN & SPACIOUS WITH LOADS OF WINDOWS AND LIGHT. SOARING CEILINGS, GLEAMING HARDWOOD FLOORS, 5 BEDROOMS, 4.1 BATHS, 1800 SQ FT OF FINISHED LL, 3 CAR GARAGE, ENCLOSED LANAI, 3 FIREPLACES, FULL LL BAR, WINE CELLAR, 1200+ SQ FOOT STAMPED CONCRETE PATIO, MID LEVEL WALK OUT, PLANTATION SHUTTERS THROUGHOUT, BEAUTIFUL DETAILED STONEMWORK.

[FIND MORE](#) [VIEW MAP](#) [VIEW PDF](#) [SEND TO CLIENTS](#) [VIRTUAL TOUR](#)



**Shara Collins**  
ReeceNichols-Leawood  
Phone: 913.266.5579  
Mobile: 913.707.2773  
Fax: 913.945.3173  
[SHARA@reecenichols.com](mailto:SHARA@reecenichols.com)  
[My Website](#)



All information deemed reliable but not guaranteed.