

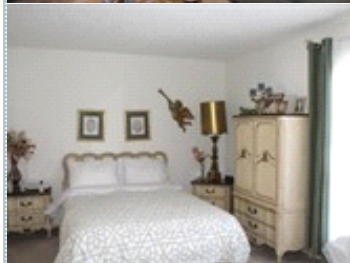
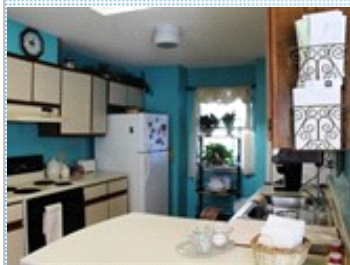


End-Unit Townhome in Chisel Run

Peaceful Setting

5413 Sasha Court , Williamsburg VA 23188

MLS: 10103049 PRICE: \$145,000.00



Bedrooms: 2
Full Baths: 1
Half Baths: 1
Parking: 2 Cars
Floors: 1

Subdivision: Chisel Run
Year Built: 1986
HOA: Chisel Run HOA
Sqft: 1116

PROPERTY FEATURES:

- ❑ Central A/C
- ❑ Hardwood floor
- ❑ Refrigerator
- ❑ Dryer
- ❑ Central heat
- ❑ Living room
- ❑ Stove/Oven
- ❑ Laundry area - inside
- ❑ High/Vaulted ceiling
- ❑ Dishwasher
- ❑ Washer
- ❑ Balcony, Deck, or Patio

OTHER FEATURES:

- ❑ Foyer
- ❑ Back deck
- ❑ Cable tv hook-up
- ❑ Window treatments
- ❑ Trash pickup
- ❑ Dining area
- ❑ Ceiling fans
- ❑ Satellite dish
- ❑ Ground maintenance
- ❑ Front porch
- ❑ Storm doors
- ❑ Skylights
- ❑ Playgrounds

PROPERTY DESCRIPTION:

End-unit Townhome with open floor plan, backs to wooded area. Back deck overlooks woods for privacy and enjoying wildlife. Other features include: cathedral ceiling, large bedrooms with split bath, hardwood entry, new skylights, new dishwasher, satellite dish, gas heat, central air, sealed crawl space and some replacement windows.

[VIEW PDF](#)

[SEND TO CLIENTS](#)



Lynn Grimsley
RE/MAX Peninsula
Phone: 757.806.6015
Mobile: 757.715.5966
Fax: 757.299.5462
lynn@lynngrimley.com
[My Website](#)



RE/MAX

