

Plainfield Lunch THURSDAY Feb 16

11am-1pm

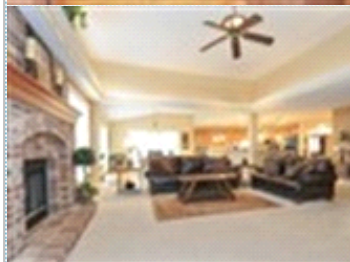
12102 Winterberry Lane , Plainfield IL 60585

MLS:09480913 PRICE:\$439,900.00



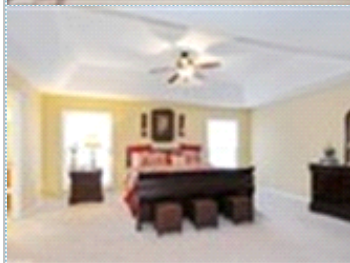
Bedrooms: 4
Full Baths: 2
Half Baths: 1
Parking: 3 Cars

Subdivision: Heritage Oaks
Year Built: 2006
Lot Size: 75x140
Sqft: 3937



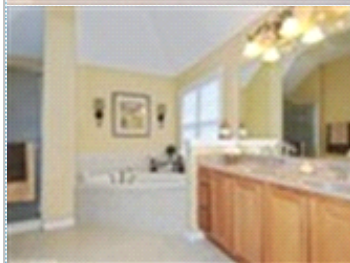
PROPERTY FEATURES:

- ❑ Central A/C
- ❑ High/Vaulted ceiling
- ❑ Family room
- ❑ Dining room
- ❑ Stove/Oven
- ❑ Stainless steel appliances
- ❑ Balcony, Deck, or Patio
- ❑ Central heat
- ❑ Walk-in closet
- ❑ Living room
- ❑ Breakfast nook
- ❑ Microwave
- ❑ Attic
- ❑ Yard
- ❑ Fireplace
- ❑ Hardwood floor
- ❑ Office/Den
- ❑ Dishwasher
- ❑ Granite countertop
- ❑ Basement



PROPERTY DESCRIPTION:

Absolutely stunning custom home in highly desirable North Plainfield. Gorgeous, upgrades throughout. Notice the details: upgraded finishes & fixtures. hardwood floors, custom trim and molding, tray ceilings, rounded corners. Enter from the inviting front porch into 2 story foyer. Formal living room & dining room and private office with french door. Huge family room with fireplace, many bright windows. Surround sound. Gourmet kitchen with custom island, granite counter tops, maple cabinets, large eating area. Sliding glass door to amazing yard & paver patio. Perfect for entertaining, relaxing & plenty of space for play. Surround sound throughout the home. 4 large bedrooms & loft on second floor. Bedroom 2 has walk in closet. Master bedroom with private luxury bathroom, walk in closet. 3car tandem garage. Dual furance. Huge basement ready for your finishes has rough in for future bathroom. Award winning Plainfield Schools: Freedom Elementary, HeritageGrove MS, Plainfield North HighSchool



[VIEW PDF](#)

[SEND TO CLIENTS](#)

[VIRTUAL TOUR](#)

Shelbey Hammond
Coldwell Banker Honig-Bell
Phone: (630)292.2998
shelbeyhammond@comcast.net

