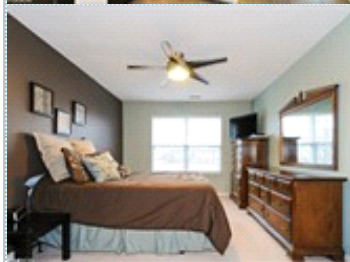
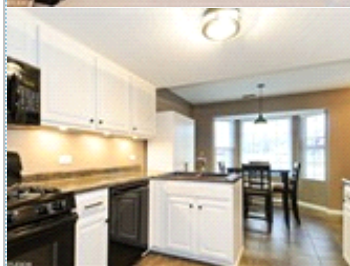


Crest Hill Broker's Open - Lunch Served

Wed 1/25 11:30-1:30 (open 9am-4pm)

2135 Jasmine Drive , Cres Hill IL 60403

MLS:09480439 PRICE:\$152,900.00



Bedrooms: 2
Full Baths: 1
Half Baths: 1
Floors: 2

Subdivision: Crest Estates
Year Built: 1997
HOA: 115

PROPERTY FEATURES:

- ❑ Central A/C
- ❑ High/Vaulted ceiling
- ❑ Living room
- ❑ Dishwasher
- ❑ Microwave
- ❑ Laundry area - inside
- ❑ Central heat
- ❑ Walk-in closet
- ❑ Dining room
- ❑ Refrigerator
- ❑ Washer
- ❑ Balcony, Deck, or Patio
- ❑ Fireplace
- ❑ Tile floor
- ❑ Breakfast nook
- ❑ Stove/Oven
- ❑ Dryer
- ❑ Yard

PROPERTY DESCRIPTION:

Gorgeous 2 BR end-unit townhome. Meticulously maintained, in excellent condition. Updated fixtures and finishes throughout. Large Kitchen with dinette features bay window, newer upgraded tile flooring, counter tops and cabinets. 2 story vaulted living room with fireplace. Formal dining space with updated fixtures, sliding glass door to patio and plenty of space for relaxation, entertaining or play. Ceiling fans in each bedroom. Master bedroom with walk in closet. Large loft could easily be converted to a 3rd bedroom (has a closet)! Full bath includes large soaking tub, separate shower. Highly desirable Plainfield District 202 Schools. Close to shopping, highways, transportation. The perfect home! New driveway in 2015. New roof to come

[VIEW MAP](#)

[VIEW PDF](#)

[SEND TO CLIENTS](#)

[VIRTUAL TOUR](#)

Shelbey Hammond
Coldwell Banker Honig-Bell
Phone: (630)292.2998
shelbeyhammond@comcast.net

