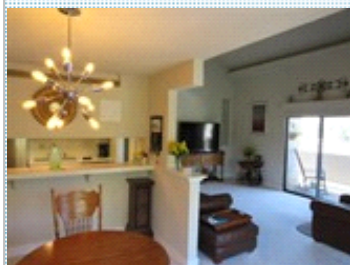


Very Rare River Front Condo

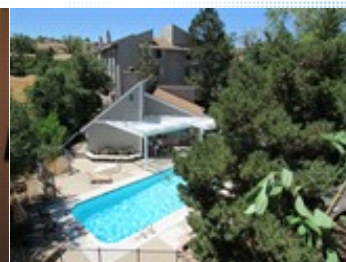
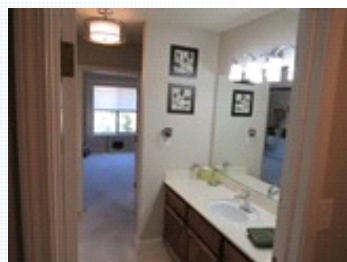
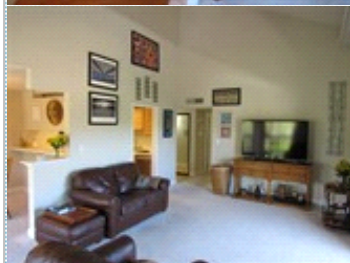
Beautiful Top Floor Corner Residence

2845 Idlewild Dr. # 315 , Reno NV 89509



MLS: 160011706

PRICE: \$279,000.00



Bedrooms: 2
Full Baths: 2
Parking: 2 Cars
Floors: 1

Subdivision: RiverFront 1
Year Built: 1981
Sqft: 1444

PROPERTY FEATURES:

- ❑ Central A/C
- ❑ High/Vaulted ceiling
- ❑ Bonus/Rec room
- ❑ Refrigerator
- ❑ Stainless steel appliances
- ❑ Swimming pool
- ❑ Central heat
- ❑ Walk-in closet
- ❑ Dining room
- ❑ Stove/Oven
- ❑ Laundry area - inside
- ❑ Jacuzzi/Whirlpool
- ❑ Fireplace
- ❑ Living room
- ❑ Dishwasher
- ❑ Microwave
- ❑ Balcony, Deck, or Patio

OTHER FEATURES:

- ❑ HOA amenities

PROPERTY DESCRIPTION:

This is a Very Rare opportunity to own a gorgeous Truckee River Front Top Floor Corner Residence! It features 2 Master Suites and 2 Balconies with fantastic views of the Sierra mountains and the Truckee River. Safe and Secure with vaulted ceilings, large living room & fireplace! Conveniently located near Idlewild Park and Downtown. Must See Now!!

[FIND MORE](#)

[VIEW MAP](#)

[VIEW PDF](#)

[SEND TO CLIENTS](#)

