

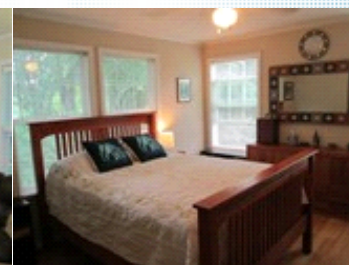
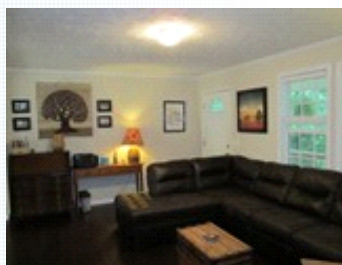


Whether Starting Out or Slowing Down

13 Lowe Ave , Asheville NC 28803

MLS: 3408523

PRICE: \$249,900.00



Bedrooms: 3
Year Built: 2013
Parking: 3 Cars
Floors: 1

Full Baths: 2
Lot Size: .36
Sqft: 1248

PROPERTY FEATURES:

- Central A/C
- Living room
- Refrigerator
- Granite countertop
- Dryer
- Central heat
- Breakfast nook
- Stove/Oven
- Stainless steel appliances
- Yard
- Walk-in closet
- Dishwasher
- Microwave
- Washer

OTHER FEATURES:

- Covered deck
- Dual Sinks in Master Bath
- Bamboo Floors
- Linen closet in Master Bath
- Fenced Dog Lot

PROPERTY DESCRIPTION:

Come see this beautiful Oakley home! Thoughtfully placed, this well cared for home sits on a corner .36 acre lot within a mile to Historical Biltmore Village, Hospital, Shopping, and local breweries. Located in the coveted Reynolds School district. Natural light abounds from the numerous windows. 3BR/2BA. Desirable split bedroom plan. Bright master with mountain views and walk in closet. Spacious master bath has double vanities and linen closet. Home is filled with upgrades: Gorgeous bamboo floors in all bedrooms and living room, granite island in kitchen, SS Kenmore appliances, Marsh solid wood cabinets, crown moulding, vinyl tile in kitchen/bathrooms. Enjoy the 4 seasons from the private covered front porch with lush Summer/Fall landscape and winter mountain views. Fenced dog lot. Easy care landscaping and room for your own garden. Bonus outdoor storage area under the deck. Generous parking for 3 cars.

[FIND MORE](#)

[VIEW MAP](#)

[VIEW PDF](#)

[SEND TO CLIENTS](#)