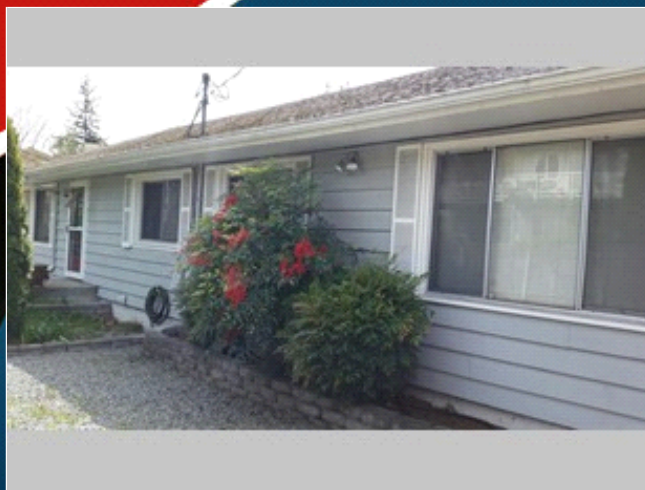




FOR SALE



Price reduced-Richmond Beach Duplex-Side-by-side

Great floor plans, yards, parking and location

1409 NW Richmond Beach Rd , Shoreline WA 98177

MLS:1257948 PRICE:\$725,950.00

Bedrooms: 5
Year Built: 1942
Parking: 6 Cars
Floors: 1

Full Baths: 3
Lot Size: 10260
Sqft: 1990

PROPERTY DESCRIPTION:

Excellent Side-By-Side Duplex nestled in the heart of Richmond Beach! Quiet setting off the road. Close to amenities, the beach and transportation. Great floor plans. Good-sized bedrooms. Nice light. Individual, fenced backyards. Plenty of room to play, garden or just relax. Unit 2 has a large, West-facing deck. Unit#1: 700 SF 2 BR/1 BA. Unit #2: 1290 SF 3 BR/1.75 BA + an oversized 1 car garage with loft. Lots of parking. Great long-term tenant on month-to-month lease. Rents below market value.

[VIEW PDF](#)

[SEND TO CLIENTS](#)



John Lough
Windermere Real Estate
Shoreline
Phone: 206.387.5777
Mobile: 206.387.5777
Fax: 206.546.5741
johnlough@windermere.com


Windermere
REAL ESTATE



All information deemed reliable but not guaranteed.