

## Gardener's Paradise- Park-like landscape!

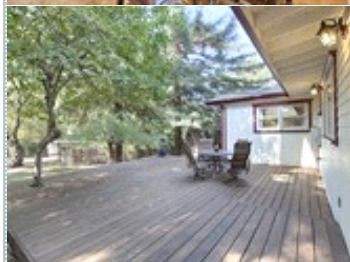
8575 Hihn Road , Ben Lomond CA 95066

MLS:ML81681870    PRICE:\$719,000.00



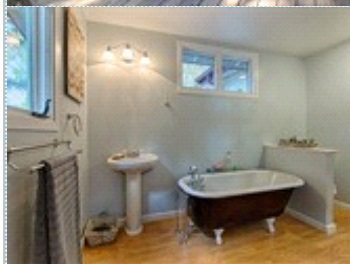
Bedrooms: 3  
Year Built: 1971  
Parking: 3 Cars  
Floors: 1

Full Baths: 2  
Lot Size: 15000  
Sqft: 1350



### PROPERTY FEATURES:

- ❑ Central heat
- ❑ Walk-in closet
- ❑ Refrigerator
- ❑ Washer
- ❑ Balcony, Deck, or Patio
- ❑ Fireplace
- ❑ Office/Den
- ❑ Stove/Oven
- ❑ Dryer
- ❑ Yard
- ❑ High/Vaulted ceiling
- ❑ Dishwasher
- ❑ Attic
- ❑ Laundry area - inside



### OTHER FEATURES:

- ❑ Quartz counters, cork floors
- ❑ RV Parking
- ❑ Enclosed pet area
- ❑ Vintage Claw Foot Tub
- ❑ High Efficiency Heater
- ❑ Fenced Yard, Storage Shed
- ❑ Office Alcove
- ❑ Deep walk in closet
- ❑ Tank Less Water Heater
- ❑ Enclosed Chicken Coop
- ❑ stone floor in Shower
- ❑ Children's Playhouse



### PROPERTY DESCRIPTION:

Imagine living in your very own Garden of Eden in one of Ben Lomond's most desired neighborhoods! Set on a flat 1/3+ acre with many varieties of Fruit trees & a Heritage Oak, Magnolia, mature Redwoods+ many more. The home features high ceilings and an open concept design, very light & bright interior. An office alcove is perfect for a home office.

[VIEW MAP](#)

[VIEW PDF](#)

[SEND TO CLIENTS](#)

[VIRTUAL TOUR](#)



Jean Marie Ragus  
David Lyng Real Estate  
Phone: (831) 566.2021  
BRE#: 00970974  
[ragusjeanmarie@gmail.com](mailto:ragusjeanmarie@gmail.com)

**DAVID LYNG**  
REAL ESTATE



All information deemed reliable but not guaranteed.