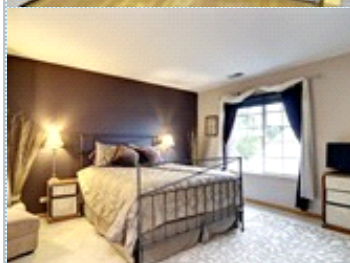
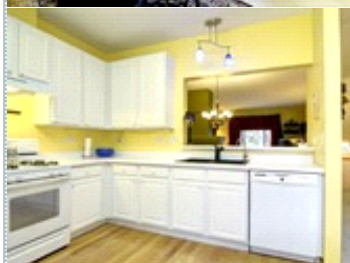
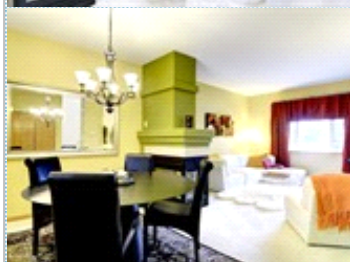
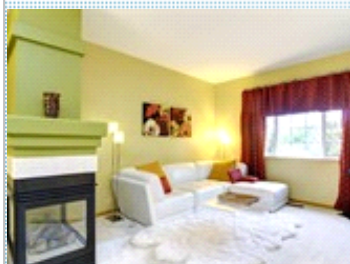


Sharp, Upbeat, & Contemporary, Polo Club Pointe

Glen Ellyn Schools, Move In Ready

1125 Andover Court , Glendale Heights IL 60139

MLS:09677169 PRICE:\$208,000.00



Bedrooms: 2
Full Baths: 1
Half Baths: 1
Lot Size: common
Sqft: 1550

Subdivision: Polo Club Pointe
Year Built: 2002
HOA: 256
Parking: 2 Cars
Floors: 2

PROPERTY FEATURES:

- ❑ Central A/C
- ❑ High/Vaulted ceiling
- ❑ Family room
- ❑ Breakfast nook
- ❑ Stove/Oven
- ❑ Washer
- ❑ Balcony, Deck, or Patio
- ❑ Central heat
- ❑ Walk-in closet
- ❑ Living room
- ❑ Dishwasher
- ❑ Microwave
- ❑ Dryer
- ❑ Fireplace
- ❑ Hardwood floor
- ❑ Dining room
- ❑ Refrigerator
- ❑ Basement
- ❑ Laundry area - inside

OTHER FEATURES:

- ❑ Stunning White Kitchen
- ❑ Open Floor Plan, 9' Ceilings
- ❑ Walk-In Closet
- ❑ Oversized Luxury Bath
- ❑ Fireplace, Finished Basement
- ❑ 2 Car Att Gar, Private Entry

PROPERTY DESCRIPTION:

OPEN HOUSE, SATURDAY August 5th, 11-2:00 in Prestigious Polo Club Pointe. Enjoy 3 Levels of Open Living Space, Perfect for Living & Entertaining. This original owner chose an Oversized Luxury Bath vs 2 small bathrooms as seen in many Units. Location, Condition, Price, AND Glen Ellyn Schools. It's All Here. Hurry to See This Home.

[VIEW PDF](#)

[SEND TO CLIENTS](#)

[VIRTUAL TOUR](#)



Debra Anderson
Executive Realty Group
Phone: 630.235.0139
Fax: 720.625.6147
debi@debianderson.com
[My Website](#)

