

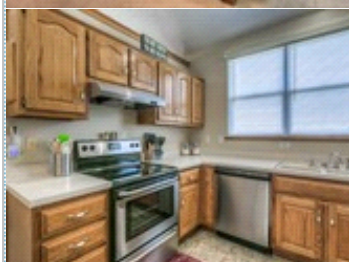
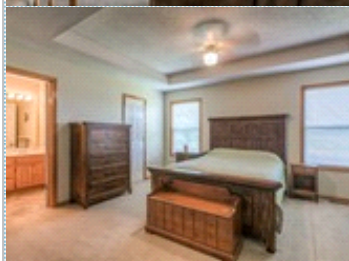
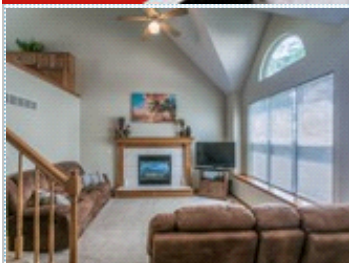
**FOR SALE**



### Move in Ready!

18310 W. 160th Terr , Olathe KS 66062

MLS:2056378



Bedrooms: 3  
Full Baths: 2  
Half Baths: 1  
Parking: 2 Cars  
Floors: 2

Subdivision: South Hampton  
Year Built: 1995  
Lot Size: 10800  
Sqft: 1636

#### PROPERTY FEATURES:

- Central A/C
- Walk-in closet
- Dishwasher
- Basement
- Laundry area - inside
- Fireplace
- Family room
- Refrigerator
- Washer
- Yard
- High/Vaulted ceiling
- Living room
- Stove/Oven
- Dryer

#### OTHER FEATURES:

- Home Warranty

#### PROPERTY DESCRIPTION:

Curb appeal, large corner lot & wonderful schools! New exterior paint and siding last year along w/new stove, range hood & dishwasher this year. Enjoy vaulted ceilings, new paint & updated bathrooms inside. This 3 bedroom 2 1/2 bath has 2 living areas along w/ deck & patio to give you lots of options for family & entertaining guests. Move in Ready!

[VIEW PDF](#)

[SEND TO CLIENTS](#)



**Gina Walton**  
Keller Williams Realty Partners, Inc.  
Phone: 913.906.5400 Ext.4046  
Mobile: 913.449.1950  
Fax: 913.744.2746  
[gina@ginawalton.com](mailto:gina@ginawalton.com)  
[www.ginawalton.com](http://www.ginawalton.com)



All information deemed reliable but not guaranteed.