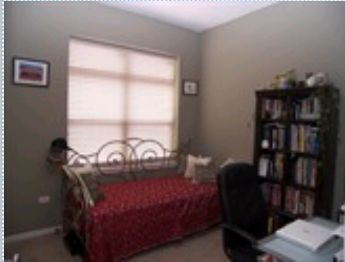
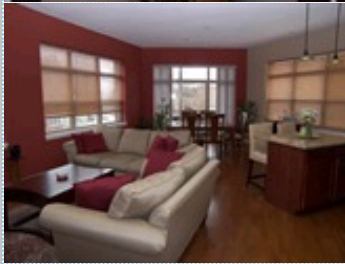
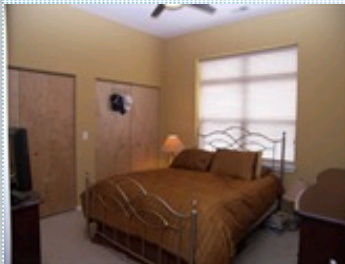


**OPEN HOUSE Sunday Noon-2pm Roscoe Village 2br/2ba**  
 Largest floorplan in bldg w/sundeck and heated gar

2915 N. Clybourn #201 , Chicago IL 60618

MLS:07410649    PRICE:\$299,900.00



**Bedrooms:** 2  
**Year Built:** 2006  
**Lot Size:** Common  
**Sqft:** 1261

**Full Baths:** 2  
**HOA:** 185  
**Parking:** 1 Car  
**Floors:** 1

**PROPERTY FEATURES:**

- Central A/C
- High/Vaulted ceiling
- Tile floor
- Dishwasher
- Microwave
- Washer
- Balcony, Deck, or Patio
- Central heat
- Walk-in closet
- Living room
- Refrigerator
- Granite countertop
- Dryer
- Fireplace
- Hardwood floor
- Dining room
- Stove/Oven
- Stainless steel appliances
- Laundry area - inside

**OTHER FEATURES:**

- Sundeck w/panoramic views
- 10' ceilings
- Heated Garage space avail.
- Elevator building
- Unique floorplan
- End unit condo w/private ter

**PROPERTY DESCRIPTION:**

LARGEST CORNER UNIT WITH FULL SKYLINE VIEWS. BRIGHT AND SUNNY HOME IN NEWER ELEVATOR BLDG. STEPS TO HAMLIN PARK WITH POOL & DOG PARK. \$15,000 IN UPGRADES COMPLETE: CHERRY CABS, SS APPS, GRNTE & LRG ISLAND. HARDWOOD FLRS THROUGHOUT, IN-UNIT W/D, FIREPLACE, 10FT CEILINGS & BALCONY. ROOFTOP DECK WITH PANORAMIC CITY VIEW. STEPS TO ROSCOE VILLAGE AND CONVENIENCES TARGET, GYM, DOMINICK, COSTCO! BUILDING FHA APPROVED INDOOR HEATED GARAGE PARKING AVAILABLE!

[FIND MORE](#)

[VIEW MAP](#)

[VIEW PDF](#)

[SEND TO CLIENTS](#)



**Mark Malave**  
 American International Realty Corp.  
 Phone: 773.435.1605  
 Fax: 773.435.1605  
[m.malave@comcast.net](mailto:m.malave@comcast.net)  
[www.markmalave.com](http://www.markmalave.com)

